

**Publications of the Week**
**Logic-Gated ROR1 Chimeric Antigen Receptor Expression Rescues T Cell-Mediated Toxicity to Normal Tissues and Enables Selective Tumor Targeting**

 First Author: Shivani Srivastava | Senior Author: Stanley Riddell (pictured)  
 Cancer Cell | Fred Hutch and UW

 Following lymphodepletion, CAR-T cells targeting the tumor-associated antigen ROR1 lysed tumors in mice but induced lethal bone marrow failure due to recognition of ROR1<sup>+</sup> stromal cells. To improve selectivity, the authors engineered T cells with synthetic Notch receptors specific for EpCAM or B7-H3, which are expressed on ROR1<sup>+</sup> tumor cells but not ROR1<sup>+</sup> stromal cells. [Abstract](#)
**Vitamin D-Binding Protein Deficiency and Homozygous Deletion of the GC Gene**

 First Author: Clark Henderson | Second Author: Laura Fink (pictured) | Senior Author: Julien Marcadier  
 The New England Journal of Medicine | UW

 A 58-year-old woman with debilitating ankylosing spondylitis who was born to consanguineous parents was found to have an apparent severe vitamin D deficiency that did not respond to supplementation. Liquid chromatography–tandem mass spectrometry showed the absence of circulating vitamin D-binding protein, and chromosomal microarray confirmed a homozygous deletion of the group-specific component gene that encodes the protein. [Abstract](#)
**Old Cogs, New Tricks: The Evolution of Gene Expression in a Chromatin Context**

 First Author: Paul Talbert | Senior Author: Steven Henikoff (pictured)  
 Nature Reviews Genetics | Fred Hutch

 The authors explore the extent to which transcriptional regulatory components function in the context of the evolutionarily ancient role of chromatin as a barrier to processes acting on DNA, and how chromatin proteins have diversified to carry out evolutionarily recent functions that accompanied the emergence of differentiation and development in multicellular eukaryotes. [Abstract](#)
[View All Publications](#)
**Awards**
**Dr. Yiting Lim Named AACR NextGen Star**

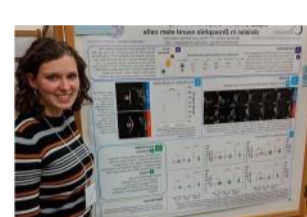
Fred Hutch


 The American Association for Cancer Research (AACR) has named Fred Hutch prostate cancer researcher Dr. Yiting Lim (pictured) a NextGen Star. Dr. Lim, a postdoctoral fellow in the Hsieh Lab, was recognized for her work charting the landscape of prostate cancer mutations in previously overlooked areas of our genetic code that regulate how genes are expressed and how proteins are produced. [Read More](#)
**ITHS Faculty Member Brenda Zierler Recognized for Leadership in Fostering Collaboration in Healthcare Teams**

Institute of Translational Health Sciences


 Dr. Brenda Zierler (pictured) has been named this year's recipient of the Gerakline "Polly" Bednash Lectureship Award to honor her contributions to nursing, health care, higher education and interprofessional education. Dr. Zierler is the co-director for the Institute of Translational Health Sciences (ITHS) program in Collaboration and Multidisciplinary Team Science. [Read More](#)
**Mackenzie Coston Wins 1<sup>st</sup> Prize at the NW Development Biology Meeting**

UW Department of Biology


 UW Biology senior Mackenzie Coston (pictured) won first prize in the undergraduate poster competition at the Northwest (NW) Developmental Biology Meeting, which includes a travel scholarship to the Society for Developmental Biology National Meeting. Her research is focused on the impact of the Na<sup>+</sup>/H<sup>+</sup> antiporter in asymmetric division of *Drosophila* neural stem cells. [Read More](#)
[View All Awards](#)
**Local News**
**After Researchers Struggle to Find Funding, UW Researcher Proposes New Funding System**

The Daily


 Funding is one of the biggest hurdles researchers face today. Acquiring money for research is a long and tiresome process which, more often than not, ends with rejection. Dr. Ferric Fang from UW, along with his colleague Arturo Casadevall of Johns Hopkins University, came up with a model to redesign the grant decision process by incorporating a modified lottery system. [Read More](#)
**Where Seattle's Life Sciences Sector Ranks on a National Scale**

Puget Sound Business Journal


 Seattle has often been touted as an emerging life sciences town, but a recent CBRE Group Inc. report shows how promising the city really is for the industry. Seattle ranked No. 1 as an emerging life sciences hub, making it a prime candidate to become a leader in the life sciences. According to the report, Seattle has "premier educational and medical institutions to drive continued industry growth". [Read More](#)
**Prevention Community Mourns Dr. Alan Kristal, Cancer Epidemiologist**

Fred Hutch


 Dr. Alan Kristal (pictured), a Fred Hutch epidemiologist and a trained chef whose zest for life was matched by his zeal to discover ways to reduce the risk of cancer, has died. He was 66. The cause was pancreatic cancer. He was diagnosed in late August, nearly two years into his retirement from Fred Hutch and UW. For more than 29 years, Kristal was a key epidemiologist in the Hutch's Cancer Prevention Program. [Read More](#)
**Current Biology Interviews Sue Biggins**

Current Biology


 Dr. Sue Biggins (pictured) started her laboratory in the Division of Basic Sciences at Fred Hutch in 2000 where she recently became the Director. Her lab is interested in understanding how cells ensure accurate chromosome segregation during cell division. She is a Howard Hughes Medical Institute Investigator as well as an elected member of the American Academy of Arts and Sciences and the National Academy of Sciences. [Read More](#)
**Can We Regenerate Heart Muscle with Stem Cells?**

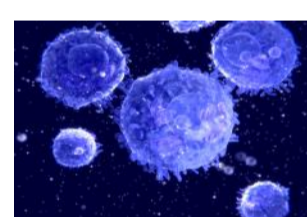
TED Talks


 The heart is one of the least regenerative organs in the human body -- a big factor in making heart failure the number one killer worldwide. What if we could help heart muscle regenerate after injury? Physician and scientist Chuck Murry (pictured) shares his groundbreaking research into using stem cells to grow new heart cells -- an exciting step towards realizing the awesome promise of stem cells as medicine. [Read More](#)
**Could a Simple Blood Test Replace the Invasive Tissue Biopsy?**

Fred Hutch


 The appeal of a simple blood test to detect and analyze cancer is obvious. It could replace the necessary evil of tissue biopsies -- invasive, often risky and painful procedures to collect tumor cells with a needle or through surgery. At the American Association of Cancer Research annual meeting, researchers presented results from a clinical trial that found a commercial blood test was as effective as tissue biopsies at detecting multiple genetic mutations in lung cancer patients. [Read More](#)
**Scientists Prod Immune Cells to Attack Pancreatic Cancer**

UW Medicine


 It's possible to prod immune cells to attack and kill pancreatic cancer cells, according to new research from scientists at UW Medicine and Fred Hutch. Their findings challenge the commonly held view that pancreatic cancer does not elicit an immune system response that is robust enough for immunotherapy to be effective. [Read More](#)
**Seattle Startup Rodeo Therapeutics Raises More Cash for Regenerative Medicine Treatments**

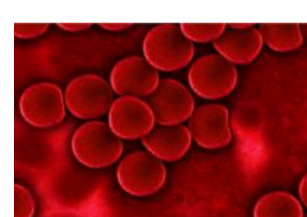
GeekWire


 Seattle-based startup Rodeo Therapeutics is raising more cash for its work on tissue repair and regeneration. The company has reeled in another \$4.3 million, according to a new regulatory filing. The biotech startup is focused on creating treatments for inflammatory bowel disease as well as a drug that helps cancer patients' cells grow quickly following stem cell transplants. [Read More](#)
**Expert Panel Discusses 21<sup>st</sup> Century Health Care ahead of ISB's Future of Health Symposium**

Institute for Systems Biology (ISB)


 Speaking to an audience of 75 people at a Town Hall Seattle panel discussion focusing on the future of health, Dr. Lee Hood said that 21<sup>st</sup> century health care will optimize patient health; identify transitions from health to disease and reverse them, and protect patients from chronic disease; lead to a striking decrease in health care costs; and transform health care from a focus on disease to wellness. [Read More](#)
**Blood Clots: What Cancer Patients Need to Know**

Fred Hutch


 Blood clots, also known as thrombi, or, when they break loose and lodge in the lung, venous thromboembolisms, are the next leading cause of death in cancer patients after cancer itself. They're common, they're scary, they're potentially lethal and they're pricey -- yet they're not always on the radar of patients or clinicians. Luckily, for the last three decades, they've been on the radar of Fred Hutch's Dr. Gary Lyman. [Read More](#)
[View All Articles](#) | [Submit an Article](#)
**Upcoming Events in Seattle**

April 9 7:00 PM	<b>Science in the City: Eradicating Malaria – The Big Fight Against Little Mosquitos</b> Pacific Science Center
April 11 5:00 PM	<b>Life Science Industry Networking Event</b> Agora Conference Center
April 12 - 13 8:00 AM	<b>ComSciCon-PNW 2019</b> Waterfront Activities Center
April 16 7:00 PM	<b>Science in the City: Mysteries of the Deep – Seattle's Underwater Secrets</b> Pacific Science Center
April 24 - 25 8:00 AM	<b>Life Science Innovation Northwest</b> Washington State Convention Center

[View All Events](#) | [Submit an Event](#)
**Science Jobs in Seattle**

<b>Director, Drug Safety Operations</b> Zymeworks
<b>Manager/Senior Manager, Nonclinical Outsourcing</b> Inpex Neuropharma
<b>Senior Research Scientist, Oncology</b> Gilead
<b>Staff Scientist, Molecular and Behavioral Neuroscience</b> Fred Hutch
<b>Research Scientist Engineer 3</b> UW Department of Genome Sciences

[View 43 Other Science Jobs](#) | [Submit a Job](#)
**STEMCELL Jobs**

<b>Scientific Sales Representative, Cell Separation Products, Seattle</b> STEMCELL Technologies
<b>Program Manager, Scientific Communications, Histochemistry, Vancouver</b> STEMCELL Technologies
<b>Scientific Recruiter, Vancouver</b> STEMCELL Technologies
<b>Senior Quality Assurance Specialist, Vancouver</b> STEMCELL Technologies
<b>Scientific Sales Representative, Cell Culture Products</b> STEMCELL Technologies

[View 117 Other STEMCELL Jobs](#) | [Submit a Job](#)

**STUDYING HEMATOPOIESIS? VISIT THE RESOURCES.**

Videos, Tips, and Protocols to Help With All Your Research Questions.

[VISIT NOW](#)

BROUGHT TO YOU BY

