

Publications of the Week
Histone Deposition Pathways Determine the Chromatin Landscapes of H3.1 and H3.3 K27M Oncohistones

 First Author: Jay Sarthy | Senior Author: Steven Henikoff *(pictured)*
 eLife | Fred Hutch and UW


Using *Drosophila* as a model, researchers demonstrated that inhibition of H3K27 trimethylation occurred only when H3K27M oncohistones were deposited into chromatin and only when expressed in cycling cells. They proposed that oncohistones inhibit the H3K27 methyltransferase as chromatin patterns are being duplicated in proliferating cells, predisposing them to tumorigenesis. [Abstract](#)

The Optoretinogram Reveals the Primary Steps of Phototransduction in the Living Human Eye

 First Author: Vimal Prabhu Pandiyan | Senior Author: Ramkumar Sabesan *(pictured)*
 Science Advances | UW


Researchers revealed that the onset of phototransduction is accompanied by a rapid, nanometer-scale electromechanical deformation in individual human cone photoreceptors. Characterizing this phenomenon was enabled by high-speed phase-resolved optical coherence tomography in a line-field configuration that allowed sufficient spatiotemporal resolution to visualize the nanometer/millisecond-scale light-induced shape change in photoreceptors. [Abstract](#) | [Press Release](#)

[View All Publications](#)
Local News
Common HIV Drugs Increase a Type of Immunity in the Gut

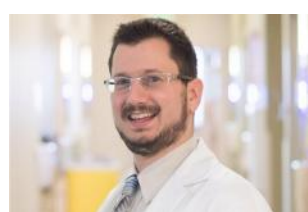
UW Medicine



Drugs currently used to keep the HIV virus in check also cause immune system changes that might make humans better able to resist viral infections – but might also cause harmful inflammation of the gut. These findings come from a UW study led by Dr. Florian Hladik *(pictured)* examining the effects of a commonly prescribed cocktail of drugs on the body. [Read More](#)

Immunotherapy Trial in Advanced Bladder and Other Urinary Tract Cancers Shows 'Exciting' Results

Fred Hutch



In a large randomized clinical trial, researchers evaluated the immunotherapy drug avelumab for patients with advanced urothelial cancer. The findings of the trial, called the JAVELIN Bladder 100 study, are "very exciting," even "practice-changing," said Fred Hutch's Dr. Petros Grivas *(pictured)*, co-leader of this global, industry-sponsored trial. [Read More](#)

'Everything We've Been Training for Is Happening Now'

Fred Hutch



The first US case of COVID-19 had made headlines the previous week, but Dr. Tyler Starr *(pictured)*, a postdoc in Dr. Jesse Bloom's lab at Fred Hutch was focused on his work examining how specialized immune proteins interact with HIV. Bloom wondered if Starr could use the system he'd spent a year and a half perfecting to study the virus behind COVID-19 instead? [Read More](#)

Open Datasets Can Support Virtual Science Education

Allen Institute



For the Allen Institute's inaugural Open Science Week, they spoke with three college neuroscience and biology professors who are using public Allen Institute resources — data, lesson plans, and other tools — in their virtual classrooms this fall. Two neuroscience professors are using datasets from the Allen Brain Map, an online portal with publicly available data and other resources generated by researchers in the Allen Institute for Brain Science. [Read More](#)

Seattle Genetics and Astellas Announce Positive Results for PADCEV® in Phase 3 Urothelial Cancer Trial

Seattle Genetics



Seattle Genetics and Astellas Pharma Inc. have announced that a phase 3 trial of PADCEV® has met its primary endpoint of overall survival compared to chemotherapy. The global EV-301 clinical trial compared PADCEV to chemotherapy in adult patients with locally advanced or metastatic urothelial cancer who were previously treated with platinum-based chemotherapy and a PD-1/L1 inhibitor. [Read More](#)

Athira Pharma Raises \$204M in IPO, Reaching 'Big Milestone' in Fight against Alzheimer's and Other Diseases

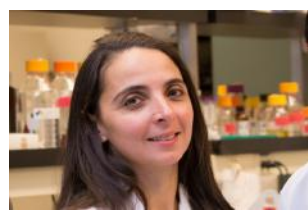
GeekWire



Athira Pharma is on a mission to treat Alzheimer's disease — and now it has additional capital and a bigger platform to pursue that goal as a public company. "This is a big milestone," Athira CEO Leen Kawas *(pictured)* said following its initial public offering. "We are one step closer to hopefully impacting a lot of people's lives positively." [Read More](#)

Taking on Multiple Sclerosis

Benaroya Research Institute (BRI) at Virginia Mason



Multiple sclerosis (MS) is extremely difficult to study because the structure the immune system attacks — called the myelin sheath — is buried deep in the brain and spinal cord. Despite the pandemic, Dr. Estelle Bettelli *(pictured)* and her team at BRI have kept their research moving forward, developing sophisticated MS models to investigate its mysteries and pursue innovative therapies. [Read More](#)

[View All Articles](#) | [Submit an Article](#)
Upcoming Events in Seattle

September 29 7:00 PM	Calling BS: The Art of Skepticism in a Data-Driven World Online
September 29 - October 1 8:00 AM	Online Bernstein Conference 2020 Online
October 1 8:00 AM	Allen Institute for Brain Science Distinguished Seminar Series Online
October 7 9:00 AM	Exploring Frontiers: The Future of Brain Health Research Online
October 8 9:00 AM	17th Annual STD & AIDS Research Symposium Online

[View All Events](#) | [Submit an Event](#)
Science Jobs in Seattle
Assistant Investigator, Alzheimer's Disease Research

Allen Institute for Brain Science

Postdoctoral Fellow, Immune Signaling Pathways

Seattle Children's

Bioinformatics Scientist, Immunology

Allen Institute for Immunology

Research Associate, Oligo Production

Cepheid

Scientist, Immuno-Oncology

Systimmune

[View 31 Other Science Jobs](#) | [Submit a Job](#)
Free Wallchart:
SARS-CoV-2 Structure and Life Cycle
[REQUEST A COPY](#)

 Submit your articles and events by reaching out to us at info@scienceinseattle.com.

BROUGHT TO YOU BY


STEMCELL Technologies
[Products](#) | [Services](#)
STEMCELL Science News
[Free Weekly Updates on Your Field](#)
The Stem Cell Podcast
[Interviews and Updates on Stem Cell Science](#)