

Publications of the Week
Germline SAMD9L Truncation Variants Trigger Global Translational Repression

First Author: Eric Allenspach (pictured) | Senior Author: David Rawlings PNAS | Seattle Children's, UW, and Brotman Baty Institute



SAMD9L is an interferon-induced tumor suppressor implicated in a spectrum of multisystem disorders, including risk for myeloid malignancies and immune deficiency. The authors identified a heterozygous *de novo* frameshift variant in SAMD9L in an infant with B cell aplasia and clinical autoinflammatory features who died from respiratory failure with chronic rhinovirus infection. [Profile](#) | [Abstract](#)

N-Terminal Domain Antigenic Mapping Reveals a Site of Vulnerability for SARS-CoV-2

First Author: Matthew McCallum | Senior Author: David Veesler (pictured) Cell | UW



The authors describe 41 human monoclonal antibodies (mAbs) derived from memory B cells, which recognize the SARS-CoV-2 spike N-terminal domain (NTD) and show that a subset of them neutralize SARS-CoV-2 ultrapotently. They define an antigenic map of the SARS-CoV-2 NTD and identify a supersite (designated site 1) recognized by all known NTD-specific neutralizing mAbs. [Profile](#) | [Abstract](#) | [Press Release](#)

TGFβ Restricts Expansion, Survival, and Function of T Cells within the Tuberculous Granuloma

First Authors: Benjamin Gem and Kristin Adams | Senior Authors: Kevin Urdahl (pictured, left) and Michael Gerner (right) Cell Host & Microbe | UW and Seattle Children's



In a murine infection model, the authors observed that IFNγ production by *Mycobacterium tuberculosis*-specific CD4 T cells is rapidly extinguished within the granuloma but not within unaffected lung regions, suggesting localized immunosuppression. They identified a signature of TGFβ signaling within granuloma-infiltrating T cells in both mice and rhesus macaques. [Profile](#) | [Abstract](#)

Genetic Architectures of Proximal and Distal Colorectal Cancer Are Partly Distinct

First Author: Jeroen Huyghe (pictured) | Senior Author: Ulrike Peters Gut | Fred Hutch and UW



An understanding of the etiologic heterogeneity of colorectal cancer (CRC) is critical for improving precision prevention. To identify new anatomical sub-site-specific risk loci, the authors performed genome-wide association study meta-analyses including data of 48,214 CRC cases and 64,159 controls of European ancestry. They characterized effect heterogeneity at CRC risk loci using multinomial modeling. [Profile](#) | [Abstract](#)

[View All Publications](#)
Local News
Dr. Naeha Subramanian Promoted to Associate Professor

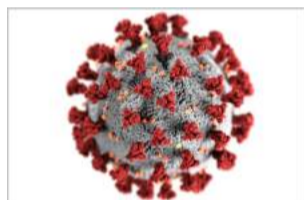
Institute for Systems Biology (ISB)



Dr. Naeha Subramanian (pictured), an expert in immunology, innate immunity, and host-pathogen interactions, has been promoted to Associate Professor. The Subramanian Lab recently published important research, including news that small, persistent increases in the expression of the immune sensor NOD1 may promote cancer risks, and details of how the bacterium *Salmonella* conceals itself from the host immune system. [Read More](#)

Omeros and Quantum Leap Announce First Patients Dosed with Narsoplimab in the I-SPY COVID-19 Trial

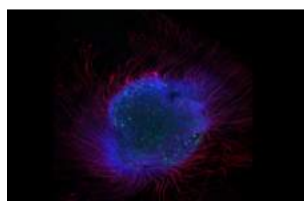
Omeros



Omeros and Quantum Leap Healthcare Collaborative has announced that dosing of patients with narsoplimab in the I-SPY COVID-19 Trial began earlier this month. The goal of the trial is to screen rapidly, in parallel, multiple promising agents in order to identify drugs that will have a high impact on reducing mortality and avoid or reduce the duration of mechanical ventilation for critically ill COVID-19 patients. [Read More](#)

NanoString, Illumina Accelerator and Doloromics Announce GeoMx Digital Spatial Profiling Collaboration

NanoString Technologies



NanoString Technologies has announced the company has awarded a Technology Access Program grant with Illumina Accelerator startup, Doloromics, focused on gaining a deeper understanding of chronic pain diseases by spatially characterizing the dorsal root ganglion. NanoString will partner with at least one startup from each global Illumina Accelerator funding cycle for a GeoMx[®] Digital Spatial Profiler Technology Access Program grant. [Read More](#)

Five Reasons Why a Cancer Research Center Has Virology Expertise

Fred Hutch



Up to 20% of cancers worldwide are caused, either directly or indirectly, by viruses and other pathogens. Fred Hutch researchers hope to answer key questions about these infectious diseases. Dr. Denise Galloway's (pictured) lab showed that nearly every case of cervical cancer arises from human papillomavirus (HPV) infection. Her team made other key discoveries that were crucial to the development of the HPV vaccine. [Read More](#)

Dr. Stuart Weinstein Begins Role as Medical Director for Spine Services

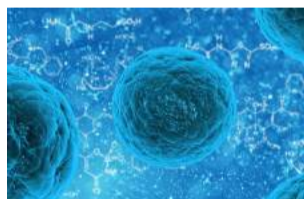
UW Medicine



Dr. Stuart Weinstein, Clinical Professor in the Department of Rehabilitation Medicine and the 2020-2021 American Academy of Physical Medicine and Rehabilitation President, began his new role as Medical Director for Spine Services in the Department of Rehabilitation Medicine. As a part of the new role, Dr. Weinstein joins the UW Spine Service Line Strategic Oversight Committee. [Read More](#)

FUJIFILM Cellular Dynamics and Sana Biotechnology Announce License Agreement for the Development of iPSC-Derived Cell Therapies

Sana Biotechnology



FUJIFILM Cellular Dynamics and Sana Biotechnology has announced that Sana has been granted a non-exclusive right to use FUJIFILM Cellular Dynamics' induced pluripotent stem cell (iPSC) platform for the development of commercial cell therapies. As a treatment modality, cell therapies have the potential to augment, repair, or replace human biology, including organs, tissues and cells. [Read More](#)

[View All Articles](#) | [Submit an Article](#)
Upcoming Events in Seattle

March 30 8:00 AM	Life Science Innovation Northwest Online
March 31 10:30 AM	The Distinguished Seminar Series: Dr. Bence Ölveczky Online
April 1 4:00 PM	Research Roundtable with Dr. Sean Gibbons Online
April 5 8:00 AM	Deep Mutational Scanning Symposium Online
April 6 5:00 PM	Webinar Series: The Microbiome and Lifestyle Online

[View All Events](#) | [Submit an Event](#)
Science Jobs in Seattle
Associate Director, Gene Editing Protein Engineering and Genomics
bluebird bio

Research Program Manager
Fred Hutch

Postdoctoral Research Associate, Autoimmune and Allergic Disease
Benaroya Research Institute at Virginia Mason

Research Scientist I, GMP
Seattle Children's

Laboratory Technical Supervisor
Adaptive Biotechnologies

[View 47 Other Science Jobs](#) | [Submit a Job](#)
Survey Report: Hurdles of Genome Editing Using CRISPR

 Submit your articles and events by reaching out to us at info@scienceinseattle.com.