

Publications of the Week

Cancer Cell-Intrinsic and Immunological Phenotypes Determine Clinical Outcomes in Basal-Like Breast Cancer

First Author: Christopher Li (pictured) | Senior Author: Arul Chinnaiyan
Clinical Cancer Research | Fred Hutch



Basal-like breast cancer (BLBC) is an aggressive molecular subtype of breast cancer that lacks targeted therapies and clinically useful tests to risk-stratify patients. The authors hypothesized that a transcriptome-based phenotypic characterization of BLBC tumors and their microenvironments may overcome this challenge. [Abstract](#)

[View All Publications](#)

Awards

BBI 'Catalytic Collaboration Grant': Bringing Precision Medicine to Pancreatic Cancer

Brotman Baty Institute (BBI)



"Precision medicine in oncology has become synonymous with DNA sequencing of a patient's tumor to inform treatment options" said Dr. Christopher Kemp (pictured). Dr. Kemp and his colleagues at Fred Hutch, including Dr. Sita Kugel, researcher Bryan Kynnap, and research biochemist Russell Moser, were awarded a BBI "catalytic collaboration grant" of \$120,000 to explore ways to reduce unknown variables. [Read More](#)

[View All Featured Awards](#)

Local News

Chromosome 8 Assembly Reveals Novel Genes, Disease Risks

UW Medicine



The full assembly of human chromosome 8 was reported this week in Nature. While on the outside this chromosome looks typical, being neither short nor long or distinctive, its DNA content and arrangement are of interest in primate and human evolution, in several immune and developmental disorders, and in chromosome sequencing structure and function generally. The lead author of the paper is Dr. Glennis Logsdon (pictured), a postdoctoral fellow at UW Medicine. [Read More](#)

Sound Pharmaceuticals Awarded \$3.1M NIH Grant to Test SPI-1005 in COVID-19

BioSpace



Sound Pharmaceuticals has announced a Cooperative Grant award from the National Center for Advancing Translational Sciences at the NIH for \$3.1M to support the testing of SPI-1005 in two Phase 2 clinical trials for the treatment of patients with COVID-19. SPI-1005 is an oral capsule containing ebiselen, a small molecule with novel anti-inflammatory properties being developed for several neurologic, neuropsychiatric, and respiratory indications. [Read More](#)

BBI Faculty Conversations: Dr. Tina Lockwood

Brotman Baty Institute (BBI)



BBI member Dr. Tina Lockwood (pictured) discusses her work and the field of precision medicine in this edition of BBI Faculty Conversations. She is an Associate Professor in the Department of Laboratory Medicine and Director of the Genetics and Solid Tumor Diagnostics Laboratory at UW. Her interests include the development and application of molecular methods for the detection of genomic alterations in genetic disease, hematologic malignancies, and solid tumors. [Read More](#)

Seattle Biotech Firm Impel NeuroPharma Files for \$75M IPO

GeekWire



Seattle-based biotech company, Impel NeuroPharma is set to go public. The company which develops drugs for central nervous system disorders such as migraines and Parkinson's, submitted paperwork for a \$75 million IPO. Its lead candidate, a drug that treats migraines called TRUDHESA, is going through the FDA's New Drug Application process. [Read More](#)

Umoja Biopharma Appoints Dr. Nushmia Khokhar as Chief Medical Officer

Umoja Biopharma



Umoja Biopharma has announced the appointment of Dr. Nushmia Khokha (pictured) as Chief Medical Officer. Prior to joining Umoja, Dr. Khokhar was the Senior Vice President, Head of Clinical Development at Autolus where she played a critical role in advancing the company's autologous T-cell products and clinical programs. [Read More](#)

Supercharging Antibodies for Better Medicine

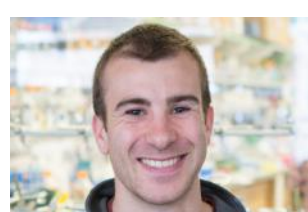
Institute for Stem Cell & Regenerative Medicine (ISCRM)



Antibodies are naturally programmed to target specific molecules and neutralize the threat by binding to the surface of the pathogen. Other types of antibodies are capable of regulating cell-to-cell communication pathways that control a wide range of biological functioning. How signaling pathways function and control regeneration is a topic of interest for Dr. Hannele Ruohola-Baker (pictured) at ISCRM. [Read More](#)

Seattle Biotech Startup Outpace Bio Raises \$30M to Fight Cancer with Custom-Designed Proteins

GeekWire



Outpace Bio has raised \$30 million to design custom cell and gene-based therapies. The Seattle startup is developing software and hardware to manipulate how cells interact with diseases. Its initial work is focused on T cell therapies that fight solid tumors. Outpace is led by co-founder and CEO Dr. Marc Lajoie (pictured), a postdoctoral scholar at UW's Institute for Protein Design. [Read More](#)

Natural Protection from COVID-19 Gets Boost from a Single Dose of Vaccine

Fred Hutch



Scientists at Fred Hutch have found evidence that patients who have been infected with the COVID-19 virus and are subsequently vaccinated against it mount a stronger immune defense than those who were vaccinated but never infected with the virus. Antibodies - roused by the vaccine in the blood of these patients - targeted not only the virus from the first-known cases, but also reacted strongly to the variants. [Read More](#)

Omics Made Easier

Fred Hutch



An "ome" is a totality. So a genome is all the DNA, including the genes, in a cell or organism. All of our proteins make up our proteome. Omic technologies allow researchers to see a more-complete picture of the ome they're interested in. How and why do researchers use omes and omics to advance knowledge? Fred Hutch spoke with experts about some of the most often-studied omes. [Read More](#)

[View All Articles](#) | [Submit an Article](#)

Interesting Articles

Biden, Congress Roll Out Big Plans to Expand National Science Foundation

Science



The idea of massively expanding the budget and mission of the National Science Foundation (NSF) to help the United States out-innovate China is gaining political momentum in Washington, D.C. President Joe Biden (pictured) lined up behind the concept, including both the new directorate and a \$50 billion bump for NSF in his \$2.3 trillion proposal to upgrade the nation's aging infrastructure. [Read More](#)

[View All Articles](#) | [Submit an Article](#)

Upcoming Events in Seattle

- April 14 12:00 PM Environmental Change: Science and Art Online
- April 15 3:30 PM Women Who Lead in Health Care Online
- April 15 6:00 PM Why We Age - And Why We Don't Have to Online
- April 16 6:00 PM Seattle University/UW Dance Marathon Online
- April 20 4:00 PM Research Roundtable with Dr. Lee Hood Online

[View All Events](#) | [Submit an Event](#)

Science Jobs in Seattle

- Bioinformatician I-II**
Benaroya Research Institute at Virginia Mason
- Associate Director, Gene Editing Protein Engineering and Genomics**
Bluebird Bio
- Senior Director, Medicinal Chemistry**
Gilead Sciences
- Postdoctoral Fellow, Signal Transduction in CAR T Cells**
Seattle Children's
- Postdoctoral Research Fellow, Innate Immunity to HIV-1**
Fred Hutch

[View 30 Other Science Jobs](#) | [Submit a Job](#)

#StemCellfie Contest 2021 STEMCELL TECHNOLOGIES ENTER BY APRIL 30

Submit your articles and events by reaching out to us at info@scienceinseattle.com.

BROUGHT TO YOU BY



- STEMCELL Technologies**
Products | Services
- STEMCELL Science News**
Free Weekly Updates on Your Field
- The Stem Cell Podcast**
Interviews and Updates on Stem Cell Science