

### Publications of the Week

#### Structural Basis for Broad Coronavirus Neutralization

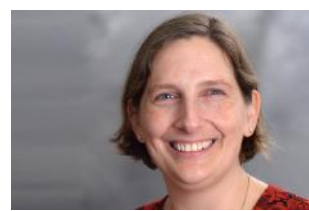
First Author: Maximilian Sauer | Senior Author: David Veesler *(pictured)*  
 Nature Structural & Molecular Biology | Fred Hutch and UW



Three highly pathogenic  $\beta$ -coronaviruses have crossed the animal-to-human species barrier in the past two decades: SARS-CoV, MERS-CoV and SARS-CoV-2. To evaluate the possibility of identifying antibodies with broad neutralizing activity, the authors isolated a monoclonal antibody, termed B6, that cross-reacts with eight  $\beta$ -coronavirus spike glycoproteins. [Abstract](#)

#### Tumor-Associated Autoantibodies from Mouse Breast Cancer Models Are Found in Serum of Breast Cancer Patients

First Author: Sasha Stanton *(pictured)* | Senior Author: Mary Disis  
 npj Breast Cancer | UW



B cell responses to tumor antigens occur early in breast tumors and may identify immunogenic drivers of tumorigenesis. Sixty-two candidate antigens were identified prior to palpable tumor development in TgMMTV-neu and C3(1)Tag transgenic mouse mammary tumor models. Five antigens were selected because their decreased expression decreased survival in human HER2 positive and triple negative cell lines in a siRNA screen. [Abstract](#)

[View All Publications](#)

### Awards

#### Dr. Yingye Zheng Named Fellow of American Statistical Association

Fred Hutch



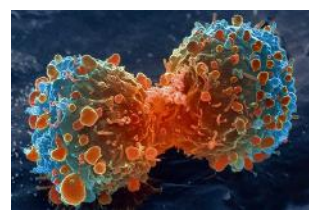
Dr. Yingye Zheng *(pictured)*, a Professor of Biostatistics in Fred Hutch's Public Health Sciences Division, has been elected as a Fellow of the American Statistical Association. Dr. Zheng joined Fred Hutch in 2003 and is an affiliate Professor of Biostatistics in the UW School of Public Health and Community Medicine. [Read More](#)

[View All Featured Awards](#)

### Local News

#### Neoleukin Therapeutics Announces Initiation of Phase 1 NL-201 Trial

Neoleukin Therapeutics



Neoleukin Therapeutics, a Seattle based biopharmaceutical company utilizing sophisticated computational methods to design *de novo* protein therapeutics, has announced dosing the first patient in a Phase 1 trial of NL-201 for advanced solid tumors. NL-201 is a *de novo* protein designed to mimic the therapeutic activity of natural cytokines interleukin-2 and interleukin-15. [Read More](#)

#### Study: Researchers Use Eel-Like Protein to Control Brain

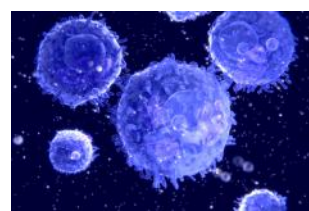
UW Medicine



Researchers looking to help people suffering from addiction, depression, and pain are studying how certain brain neurons operate to see if they can be controlled. Scientists at UW Medicine and Washington University in St. Louis, along with several other universities, successfully used a protein called parainopsin to turn off brain circuits. This protein is found in lamprey. [Read More](#)

#### New Technique Explores the Ins and Outs of Our Immune Cells

Allen Institute for Immunology



How many different "types" of immune cells do we have? What suite of changes do those cells undergo when faced with a foreign invader? Which molecular differences signal a healthy — or malfunctioning — immune system? A new method developed by scientists at the Allen Institute for Immunology, a division of the Allen Institute, aims to address some of these unknowns. [Read More](#)

#### New Adjuvanted Vaccine Candidate Using IDRI Formulation Demonstrates Coronavirus Pan-Vaccine Potential

Infectious Disease Research Institute (IDRI)



IDRI, Duke Human Vaccine Institute, and 3M have collaborated to create a vaccine candidate with potential to provide protection against multiple variants of SARS-CoV-2, as well as other coronaviruses. Study results published in *Nature* show the vaccine candidate stimulates increased levels of production of "broadly neutralizing antibodies" against several strains of coronavirus. [Read More](#)

#### COVID-19 Attacks Organs in Different Ways

UW Medicine



It was thought that the SARS-CoV-2 virus attacked blood vessels and the heart with just as much vigor as it did the lungs. But now, a new study from Dr. Pavan Bhatraju *(pictured)* shows that the virus attacks the lungs and the lining of lung tissue, and that injury to blood vessels may be less common. Blood markers indicated that lung tissue sustained more damage than blood vessels or other organs. [Read More](#)

#### Nadella Family Commit \$15 Million to Seattle Children's to Advance Precision Medicine Neurosciences and Mental Health Care

Seattle Children's



Seattle Children's has announced that the Nadella family *(pictured)* have committed \$15 million to advance precision medicine neurosciences and youth mental health care at Seattle Children's. The commitment from the Nadella family will allow Seattle Children's to improve care and advance research for children with neurological conditions in four key areas. [Read More](#)

#### ISCRM Welcomes Dr. Thelma Escobar

Institute for Stem Cell and Regenerative Medicine (ISCRM)



ISCRM is pleased to welcome Dr. Thelma Escobar *(pictured)*, who joins the Department of Biochemistry as an Assistant Professor. Dr. Escobar's lab will combine stem cell biology, immune biology, and biochemistry to investigate how histone inheritance preserves chromatin domains, to identify mechanisms for cell fate determination, and to answer other questions central to epigenetic inheritance. [Read More](#)

#### Seattle Startup TwinStrand Raises \$50M to Expand Tech That Identifies Rare Genetic Mutants

GeekWire



Gene-sequencing startup TwinStrand Biosciences has raised \$50 million in a Series B round. TwinStrand Biosciences, which spun out of UW, has developed technology in both gene sequencing and analyzing sequencing results to help it find what the company calls "genetic needles in the haystack.". "If you can't confidently see what the truth is, you're stumbling around in the dark," said CEO Dr. Jesse Salk *(pictured)*. [Read More](#)

[View All Articles](#) | [Submit an Article](#)

### Upcoming Events in Seattle

May 18 4:00 PM	<b>Research Roundtable with Dr. Jared Roach</b> Online
May 19 8:00 AM	<b>2021 Pediatric Sequencing Symposium</b> Online
May 19 12:00 PM	<b>Biostatistics Seminar Series</b> Online
May 20 10:30 AM	<b>The Distinguished Seminar Series: Dr. Liqun Luo</b> Online
May 20 5:00 PM	<b>GU Oncology Seminar Series</b> Online

[View All Events](#) | [Submit an Event](#)

### Science Jobs in Seattle

**Senior Manager, Cellular Therapeutics**  
Seattle Cancer Care Alliance

**Research Technician III, Olson Lab**  
Fred Hutch

**Scientist I, Antibody Discovery**  
Adaptive Biotechnologies

**Lab Assistant II**  
Roche

**Clinical Research Coordinator II-III**  
Benaroya Research Institute at Virginia Mason

[View 41 Other Science Jobs](#) | [Submit a Job](#)

Submit your articles and events by reaching out to us at [info@scienceinseattle.com](mailto:info@scienceinseattle.com).

BROUGHT TO YOU BY



**STEMCELL Technologies**  
Products | Services

**STEMCELL Science News**  
Free Weekly Updates on Your Field

**The Stem Cell Podcast**  
Interviews and Updates on Stem Cell Science