

Publications of the Week

A Photoswitchable GPCR-Based Opsin for Presynaptic Inhibition

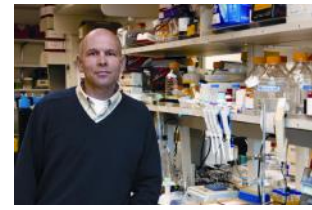
First Author: Bryan Copits (*pictured second row, first from left*) Senior Author: Michael Bruchas (*top row, second from left*)
Neuron | Center of Excellence in the Neurobiology of Addiction, Pain, and Emotion and UW



While optogenetic activation has been relatively straightforward, rapid and reversible synaptic inhibition has proven more elusive. Here, the authors leveraged the natural ability of inhibitory presynaptic G protein-coupled receptors (GPCRs) to suppress synaptic transmission and characterize parainopsin as a GPCR-based opsin for terminal inhibition. [Profile](#) | [Abstract](#) | [Press Release](#)

Selective Androgen Receptor Modulators Activate the Canonical Prostate Cancer Androgen Receptor Program and Repress Cancer Growth

First Author: Michael Nyquist | Senior Author: Peter Nelson (*pictured*)
Journal of Clinical Investigation | Fred Hutch, VA Puget Sound Health Care System, and UW



The authors investigated the antitumor effects of selective androgen receptor modulators (SARMs), which are small-molecule nonsteroidal androgen receptor (AR) agonists developed to treat muscle wasting and cachexia. Several orally administered SARMs activated the AR program in prostate cancer models. AR cistromes regulated by steroidal androgens and SARMs were superimposable. [Abstract](#)

[View All Publications](#)

Awards

Dr. Ruanne Barnabas Awarded Minority Faculty Mentoring Award

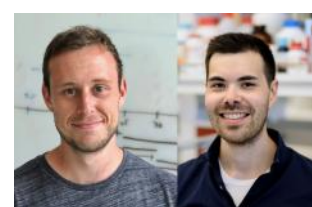
UW Medicine



Dr. Ruanne Barnabas (*pictured*), Associate Professor of Allergy and Infectious Diseases, has been awarded the 2021 Minority Faculty Mentoring Award by the UW Medicine Committee on Minority Faculty Advancement. This award recognizes the need for excellence in mentoring of under-represented faculty groups to achieve diversity and inclusion, key elements that can unleash creativity and innovation. [Read More](#)

Drs. George Ueda and James Lazarovits Are Recipients of WE-REACH Award

Institute for Protein Design



Drs. George Ueda (*pictured, right*) and James Lazarovits (*left*) of the Institute for Protein Design are working to develop a new class of therapeutic protein-based nanoparticles. This award will fund the first application of this platform technology to regenerate the cells lining blood vessels, which break down during severe infection and lead to lethal conditions such as acute respiratory distress syndrome and sepsis. [Read More](#)

[View All Featured Awards](#)

Local News

Sana Aims to Hire 100 New Employees On Heels of \$587 Million IPO

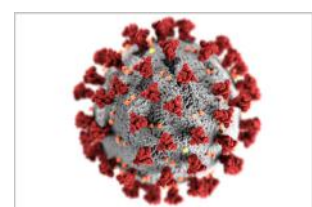
BioSpace



After Sana Biotechnology raised \$587 million in its initial public offering (IPO), the company aims to hire an additional 100 people. Chief Executive Officer Dr. Steve Harr (*pictured*) said the company is poised for significant growth as the cell and gene therapy space becomes more important in addressing diseases that have unmet needs. [Read More](#)

CEPI Funds Phase 3 Trial of UW Medicine COVID-19 Vaccine

UW Medicine



A COVID-19 nanoparticle vaccine candidate, named GPB510, has received significant additional funding from the Coalition for Epidemic Preparedness Innovations (CEPI). The funding, which will go to SK bioscience, will enable multi-national Phase 3 clinical trials, and also support additional research and development on emerging coronavirus variants of concern. [Read More](#)

Seattle Neurology Startup Eliem Therapeutics Raises \$60M

GeekWire



Eliem Therapeutics raised \$60 million to further development of its therapies for pain and depression. Led by Bob Azelby (*pictured*), the company has two lead drug candidates in development: ETX-810 for chronic pain and ETX-155 for major depressive disorder, hormone-related mood disorders, and focal onset seizures. Both are in Phase 2a clinical trials. [Read More](#)

Comparing Immune Landscapes across Respiratory Infections

Fred Hutch



Research suggests that a state of hyper-inflammation is associated with COVID-19, but it is unclear whether this immune dysregulation is unique to COVID-19 or is a hallmark of general viral respiratory infections. Dr. Sarah Vick (*pictured*) and collaborators compared the immune signatures of healthy donors to those of patients hospitalized after SARS-CoV-2 or other respiratory infections. [Read More](#)

New Tumor Models for the Development of Bladder Cancer Therapies

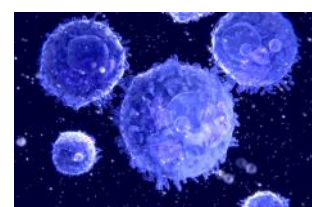
Fred Hutch



Dr. Hung-Ming Lam (*pictured*) and researchers established and characterized a new bladder cancer patient-derived xenograft (PDX) and PDX-derived organoid tumor model system. The researchers established the CoCaB 1 PDX and organoid models using tissue from an aggressive bladder cancer tumor exhibiting cisplatin resistance – the first-line chemotherapy drug regime for bladder cancer. [Read More](#)

Holding the Line: Low CpG Content and DNA Inaccessibility Safeguard T Cell Commitment

Fred Hutch



Understanding the basis for cell lineage fate decisions has many potential implications for the study and treatment of human disease. Utilizing an *ex vivo* T cell differentiation system that was developed, scientists measured Notch dose-dependent changes in DNA accessibility as hematopoietic stem cells progress through the early stages of T cell development. [Read More](#)

[View All Articles](#) | [Submit an Article](#)

Upcoming Events in Seattle

June 1 12:00 PM	Seminar: Dr. Mary Mullins Online
June 1 5:00 PM	Webinar Series: The Microbiome and Antibiotics Online
June 2 3:00 PM	Fatal Invention: Re-Creating Race in the Genomic Era Online
June 3 3:30 PM	New Faces Seminar: Dr. Rachel Bender-Ignacio Online
June 3 4:00 PM	CFAR Seminar: Dr. Nicole Doria-Rose Online

[View All Events](#) | [Submit an Event](#)

Science Jobs in Seattle

- Postdoctoral Research Associate**
Benaroya Research Institute at Virginia Mason
- Project Manager II, Cancer Research Studies**
Fred Hutch
- Director, Medicinal Chemistry**
Gilead
- Senior Research Associate**
A-Alpha Bio
- Research Associate, SBX Molecular Engineering**
Roche Diagnostics

[View 66 Other Science Jobs](#) | [Submit a Job](#)

Webinar: Modeling Alzheimer's Risk Using iPSC-Derived Microglia
By Amanda McQuade [WATCH NOW](#)

Submit your articles and events by reaching out to us at info@scienceinseattle.com.

BROUGHT TO YOU BY



- STEMCELL Technologies**
Products | Services
- STEMCELL Science News**
Free Weekly Updates on Your Field
- The Stem Cell Podcast**
Interviews and Updates on Stem Cell Science