

Publications of the Week
Mapping Functional Regions of Essential Bacterial Proteins with Dominant-Negative Protein Fragments

First Author: Andrew Savinov (pictured, left) | Senior Author: Stanley Fields (right) | PNAS | UW and Fred Hutch



Peptide fragments derived from protein sequences can inhibit interactions of their parental proteins, providing tools to study protein function *in vivo*. The authors employed a massively parallel assay to measure inhibition of *E. coli* growth by fragments tiling the sequences of ten of its essential proteins and leveraged these data to decipher principles of fragment-based inhibition. [Profile](#) | [Abstract](#)

Development of a Primary Human Intestinal Epithelium Enriched in L-Cells for Assay of GLP-1 Secretion

First Author: Cecilia Villegas-Novoa | Senior Author: Nancy Allbritton (pictured) | Analytical Chemistry | UW



Type 2 diabetes mellitus is a chronic disease associated with obesity and dysregulated human feeding behavior. The hormone glucagon-like peptide 1 (GLP-1), a critical regulator of body weight, food intake, and blood glucose levels, is secreted by enteroendocrine L-cells. The authors developed an analytical assay pipeline to screen compounds for the development of pharmaceuticals to modulate L-cell signaling. [Abstract](#)

[View All Publications](#)
Awards
Leader in Pediatric Oncology Receives National Honor from American Cancer Society

Seattle Children's



Dr. Abby Rosenberg (pictured), Director of the Palliative Care and Resilience lab at Seattle Children's and Associate Professor of Pediatric Hematology/Oncology at UW, has been awarded the 2021 Trish Greene Quality of Life Award by the American Cancer Society. The award honors those who have dedicated their career to research that improves the quality of life for cancer patients and their families. [Read More](#)

Georgina Lynch Receives \$95,147 Grant from Washington Research Foundation for Development of Autism Screening Tool

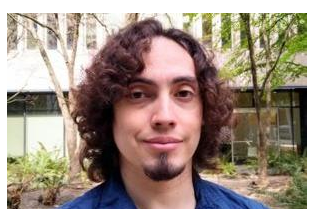
EIN Presswire



The Washington Research Foundation (WRF) has awarded a \$95,147 Phase II technology commercialization grant to Dr. Georgina Lynch (pictured) to progress the development of a pupillary light reflex tool to improve screening for autism spectrum disorder. Dr. Lynch used an earlier grant from WRF to demonstrate that the technology can generate objective data that could be especially beneficial when screening young children. [Read More](#)

Francisco Saavedra Cantillana Is a Pew Latin American Fellow

UW Institute for Stem Cell & Regenerative Medicine (ISCRM)



Dr. Francisco Saavedra Cantillana (pictured), a postdoctoral researcher at the ISCRM, was recently named one of ten 2022 Pew Latin American Fellows in the Biomedical Sciences. As a fellow, he receives two years of funding, mentorship from prominent biomedical scientists, and additional funding to start his own lab in Chile. [Read More](#)

[View All Awards](#)
Local News
UW Medicine COVID-19 Vaccine Wins South Korea Approval

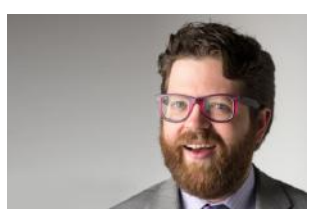
UW Medicine



A vaccine for COVID-19 based on technology developed at UW Medicine has been approved by the Korean Ministry of Food and Drug Safety for use in individuals 18 years of age and older. It becomes the first clinical therapeutic approved for use in people to emerge from efforts at the UW Institute for Protein Design. The protein-based vaccine was found to be more effective than the Oxford/AstraZeneca vaccine sold under the brand names Covishield and Vaxzevria. [Read More](#)

Boyle Lab Leads Effort to Improve Stroke Risk Assessment

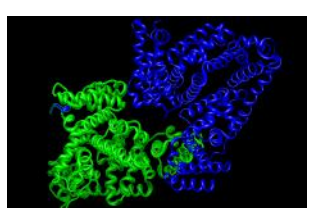
UW Institute for Stem Cell & Regenerative Medicine



Dr. Patrick Boyle (pictured) and his research team are on a mission to improve outcomes for patients with atrial fibrillation and other cardiac arrhythmias by harnessing advances in artificial intelligence, computational biology, and stem cell technology. Recently, Dr. Boyle and his lab have developed a keen interest in fibrotic remodeling, the natural wound healing process that has long been viewed as a precursor to ischemic strokes. [Read More](#)

Biotech Startups Join AWS and Other Partners in Open-Source Project to Help Design New Proteins

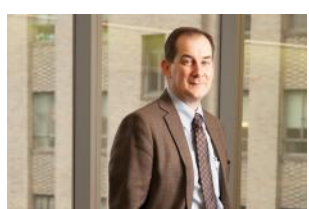
GeekWire



Three Seattle biotech companies are joining forces to support open-access development of protein folding and design software. The project, called OpenFold, brings together Cyrus Biotechnology, Outpace Bio, and Arzeda, startups developing new proteins that can be used as drugs or in industrial applications. The consortium is improving on AlphaFold2, a machine learning tool developed by Alphabet's DeepMind that predicts how proteins fold into 3D shapes. [Read More](#)

Dellit Is New Interim Leader of UW Medicine, Medical School

UW Medicine



Dr. Timothy Dellit (pictured) recently began serving as Interim CEO of the UW Medicine healthcare system, Interim Executive Vice President for Medical Affairs, and the Interim Dean of the UW School of Medicine. Dr. Dellit is a Professor of Medicine whose clinical career has focused on infectious diseases. With 21 years at UW Medicine, his training and experience has helped the healthcare system lead the nation in developing COVID-19 policies and protocols to treat patients safely and effectively. [Read More](#)

The Future of Precision Medicine: Analogous to the Discovery of the X-Ray and Development of Radiology

Brotman Baty Institute (BBI)



BBI's Dr. Colin Pritchard (pictured) believes that to chart the future of precision medicine, one needs to look no further than the development of radiology. "I believe that as we saw the first radiology residencies in the late 1920s, we may well see the first genomic medicine residencies in the 2030s," he said. "Genomic medicine is not just a set of widgets. Rather, it's becoming an emerging, and increasingly important field of medicine." [Read More](#)

ARCH Venture Partners Raises Close to \$3B for Early-Stage Biotech Fund

GeekWire



ARCH Venture Partners has closed a \$2.975 billion fund targeted for early-stage biotech companies. The firm's 12th venture fund comes on the heels of a nearly \$2 billion fund announced in January 2021 and launches amidst a biotech bear market. "Science doesn't care what markets are doing, and science moves forward," said ARCH Cofounder and Managing Director Robert Nelsen. [Read More](#)

[View All Articles](#) | [Submit an Article](#)
Upcoming Events in Seattle

- | | |
|-------------------------|---|
| July 12
4:00 pm | Research Roundtable with Dr. Sean Gibbons
Online |
| July 12
4:00 pm | BIG HART Seminar: IHART Panel
Online |
| July 14
9:00 am | Jacob Green Charity Golf Classic
The Golf Club at Newcastle |
| July 14
11:00 am | ISCRM Fellows Mini-Symposium 2022
Orin Smith Auditorium |
| July 25 - 26
8:30 am | 2022 Allen Institute Modeling Software Workshop
Allen Institute |

[View All Events](#) | [Submit an Event](#)
Science Jobs in Seattle
Research Associate III, Experimental Immunology
Allen Institute

Research Technician II
Seattle Children's

Post-Doctoral Research Fellow, Tumor Dormancy & Metabolism
Fred Hutch

Associate Scientist, Cellular Phenotype, Cell Therapy
Bristol Myers Squibb

Associate Director, Biostatistics, Virology
Gilead

[View 75 Other Science Jobs](#) | [Submit a Job](#)

We Want Your Feedback!

Take our survey and you could win a Goldie Wireless speaker.

 Submit your articles and events by reaching out to us at info@scienceinseattle.com.

BROUGHT TO YOU BY


STEMCELL Technologies
Products | Services

STEMCELL Science News
Free Weekly Updates on Your Field

The Stem Cell Podcast
Interviews and Updates on Stem Cell Science