

Publications of the Week

Ablating Lgr5-Expressing Prostatic Stromal Cells Activates the ERK-Mediated Mechanosensory Signaling and Disrupts Prostate Tissue Homeostasis

First Author: Xing Wei (*second from right*) | Senior Author: Li Xin (*third from right*)
 Cell Reports | UW, Alpenglow Biosciences, and the Institute for Stem Cell and Regenerative Medicine



Functional implication of stromal heterogeneity in the prostate remains incompletely understood. Using lineage tracing and light-sheet imaging, the authors show that some fibroblast cells at the mouse proximal prostatic ducts and prostatic urethra highly express Lgr5. Genetic ablation of these anatomically restricted stromal cells rapidly induces prostate epithelial turnover and dedifferentiation that are reversed following spontaneous restoration of the Lgr5⁺ stromal cells. [Abstract](#)

Therapeutic Targeting PRAME with mTCRCAR T Cells in Acute Myeloid Leukemia

First Author: Danielle Kirkey | Senior Author: Soheil Meshinchi (*pictured*)
 Blood Advances | UW, Fred Hutch, and Hematologics



Preferentially Expressed Antigen in Melanoma (PRAME), a cancer testes antigen, provides an ideal target for immunotherapy in acute myeloid leukemia (AML). The authors have shown expression of PRAME in a significant subset of childhood and adult AML and lack of expression in normal hematopoiesis. Although an intracellular antigen, they developed a novel approach to target PRAME using a CAR construct encoding a targeting domain based on T cell receptor (TCR) mimic antibodies that targets the peptide:HLA complex. [Abstract](#)

[View All Publications](#)

Awards

Retooling Microbes to Upcycle CO₂

UW Molecular Engineering & Sciences Institute



The US Department of Energy has awarded a five-year, \$15 million grant to an interdisciplinary, UW-led team of synthetic biologists to engineer microbial genomes that transform CO₂ into high-value chemicals. The project, led by Chemical Engineering Professor Dr. James Carothers (*pictured*), brings together expertise in CRISPR gene-expression programs, single-cell RNA sequencing, data-driven design, and carbon-conserving pathway engineering. [Read More](#)

[View All Awards](#)

Local News

UW Medicine Will Lead Study Arm of National AI Initiative

UW Medicine



Ophthalmologists at UW Medicine will have a major role in the National Institutes of Health (NIH)'s initiative to more fully realize artificial intelligence (AI)'s promise to improve medical care. The NIH Common Fund identified the universities and institutes whose work over the next four years will set the foundation for its "Bridge to Artificial Intelligence" program. [Read More](#)

Washington Research Foundation Names Tom Daniel as New CEO

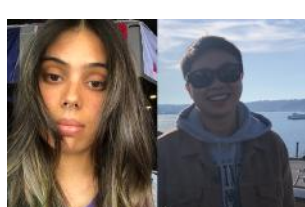
Washington Research Foundation (WRF)



The WRF has announced Dr. Tom Daniel (*pictured*) as their new Chief Executive Officer (CEO). This appointment follows the retirement of Ron Howell, who served in the position for nearly three decades. Dr. Daniel has a rich history in the life sciences sector, with deep ties to UW and WRF. After a Doctoral Degree in Biology at Duke and postdoctoral training in engineering sciences at Caltech, he joined the Biology faculty at UW in 1984. [Read More](#)

UW MoIE Welcomes Largest Cohort

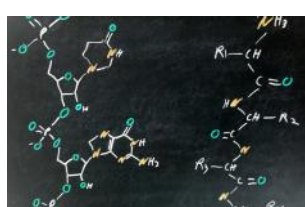
UW Molecular Engineering & Sciences Institute (MoIE)



The UW MoIE recently welcomed their 9th cohort of future molecular engineers, their largest cohort of students yet. Among the trainees are Reagan Beers (*pictured, left*), who is interested in leveraging her past research experience to study nanomaterials for sustainable technology, and Louis Chen (*right*), who is interested in polymer science, smart biomaterials, and tissue engineering. [Read More](#)

Shape Therapeutics Named One of Fierce Biotech's "Fierce 15" Companies of 2022

BioSpace



Shape Therapeutics (ShapeTX), the RNA technology company advancing programmable medicine, announced that Fierce Biotech has named it as one of 2022's Fierce 15 biotechnology companies, designating it as one of the most promising early-stage biotechnology companies in the industry. ShapeTX is leveraging artificial intelligence to discover RNA medicines that will be effective, safe, and easy to manufacture. [Read More](#)

Seattle Children's Announces Chief Research Operations Officer

Seattle Children's



Seattle Children's has appointed Dr. Eric Tham (*pictured*) as its new Senior Vice President and Chief Research Operations Officer. He will focus on research administration, finance, operations, and continue broader research leadership, effective immediately. "I'm excited to help guide the research division as it continues to grow and tackle big questions around improving child health and health equity," said Dr. Tham. [Read More](#)

Meet Stephen Mayclin through #ScienceWorks

#ScienceWorks via YouTube



Calling "Emerald City" his home, it is common to find Seattle-based x-ray crystallographer and coffee roaster, Dr. Stephen Mayclin (*pictured*), taking long walks in the region's forested enclaves. He finds inspiration in the complexity & symmetry of nature. His desire to understand life at the molecular level guides his research in neurological and immune disease spaces. Hear how his work has impacted real patients and how it's helping build a foundation for future treatments. [Read More](#)

[View All Articles](#) | [Submit an Article](#)

Upcoming Events in Seattle

- September 21 - 23 **Neuropixels and OpenScope Workshop**
Allen Institute 9:00 AM
- September 21 **Science Matters Seminar Series**
Online 12:00 PM
- September 23 **ISCRM Pluripotent Hematopoiesis Symposium**
Orin Smith Auditorium 8:30 AM
- September 25 **Run of Hope 2022**
Seward Park 10:00 AM
- September 28 - 30 **Dr. E. Donnall Thomas Symposium**
Online 9:00 AM

[View All Events](#) | [Submit an Event](#)

Science Jobs in Seattle

- Postdoctoral Scholar, Immune Cell Response to Vaccines, Department of Bioengineering**
UW Department of Bioengineering
- Postdoctoral Scholar, Self-Replicating mRNA Vaccines, Department of Bioengineering**
UW Department of Bioengineering
- Research Associate III, Neuroanatomy**
Allen Institute
- Research Associate I, Bench**
Seattle Children's
- Faculty Position, Oncology**
Fred Hutch

[View 36 Other Science Jobs](#) | [Submit a Job](#)


Submit your articles and events by reaching out to us at info@scienceinseattle.com.

BROUGHT TO YOU BY



STEMCELL Technologies
Products | Services

STEMCELL Science News
Free Weekly Updates on Your Field

The Stem Cell Podcast
Interviews and Updates on Stem Cell Science