

Publications of the Week

Polony Gels Enable Amplifiable DNA Stamping and Spatial Transcriptomics of Chronic Pain

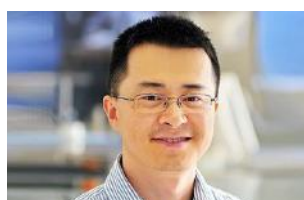
First Author: Xiaonan Fu | Senior Author: Liangcai Gu *(pictured)*
Cell | UW



Methods for acquiring spatially resolved omics data from complex tissues use barcoded DNA arrays of low- to sub-micrometer features to achieve single-cell resolution. However, fabricating such arrays requires sequencing barcodes in each array, limiting cost-effectiveness and throughput. The authors describe a vastly scalable stamping method to fabricate polony gels, arrays of ~1-micrometer clonal DNA clusters bearing unique barcodes. [Abstract](#)

Stromal FOXF2 Suppresses Prostate Cancer Progression and Metastasis by Enhancing Antitumor Immunity

First Author: Deyong Jia | Senior Author: Li Xin *(pictured)*
Nature Communications | Institute for Stem Cell and Regenerative Medicine, UW, and Fred Hutch



Cancer-associated fibroblasts mediate an immunosuppressive effect, but the underlying mechanism remains incompletely defined. The authors show that increasing prostatic stromal *Foxf2* suppresses the growth and progression of both syngeneic and autochthonous mouse prostate cancer models in an immunocompetent context. [Abstract](#)

[View All Publications](#)

Awards

'Inventor of the Year' Jay Shendure Thanks Donors Whose Flexible Funding Enables Research Freedom

Brotman Baty Institute (BBI)



Several dozen friends, family members, and supporters attended an event honoring BBI's Scientific Director Dr. Jay Shendure *(pictured)*, who was named "Inventor of the Year" by UW Medicine and UW's CoMotion. In accepting the award, Dr. Shendure noted "the incredible support of CoMotion and UW Medicine, as well as my department, the Brotman Baty Institute, and my colleagues." [Read More](#)

WRF Fellowships for Two ISCRM Undergraduate Researchers

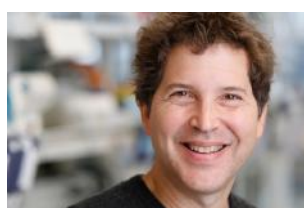
Institute for Stem Cell and Regenerative Medicine (ISCRM)



Undergraduate student researchers Dessirée Ortaç *(pictured, left)* and Eesha Murali *(right)* have received Washington Research Foundation (WRF) Fellowships that will support their time in the lab through the end of the 2023 school year. Dessirée Ortaç is a senior Biology major and an undergraduate fellow in the lab of ISCRM faculty Dr. Jennifer Davis. Eesha Murali is a freshman in Dr. Mike Regnier's lab. [Read More](#)

Clarivate Names Highly Cited Researchers

UW Medicine



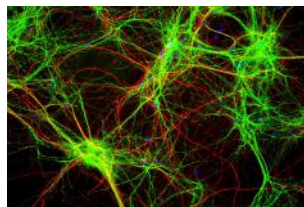
This year 38 UW School of Medicine faculty members and scientists affiliated with UW Medicine, including Dr. David Baker *(pictured)*, have been named to the Clarivate Highly Cited Researchers™ list. The preliminary list of Highly Cited Researchers is drawn from the highly cited papers that rank in the top 1% by citations for field and publication year in the Web of Science™ citation index over the past decade. [Read More](#)

[View All Awards](#)

Local News

How Do Human Neurons Respond to Psychedelics?

Allen Institute



Dr. Jonathan Ting and his team receive brain tissue removed during surgery and willingly donated by patients to uncover the workings of living human brain cells. Dr. Ting and others at the Allen Institute for Brain Science aim to build a "periodic table" of brain cell types to categorize the brain by its cellular building blocks. [Read More](#)

Clinical Outcomes Vary Across Subtypes of Pulmonary Arterial Hypertension

UW Medicine



A recent study led by Dr. Kellen Hirsch *(pictured)* examined how markers of inflammation and angiogenesis in patients with pulmonary arterial hypertension were related to clinical outcomes across disease subtypes. This was a translational retrospective study that explored how cytokine levels were associated with mortality, and how the strength of those connections depended on specific disease subtypes. [Read More](#)

Tech Moves: Seagen Names New CEO

GeekWire



Seattle biotech giant Seagen has appointed a new CEO, David Epstein *(pictured)*, a former executive at Novartis. Epstein also joined the company's board of directors. Epstein has more than 30 years of experience in the biopharmaceutical industry, including 25 years at Novartis, where he built the company's oncology business unit up from its inception, ultimately serving as CEO of Novartis Pharmaceuticals. [Read More](#)

To Improve a Promising Cancer Drug, Cut It in Half

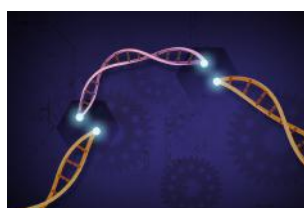
UW Medicine



To improve Neo-2/15, a promising cancer drug, a team led by recent UW Bioengineering graduate student Alfredo Quijano-Rubio *(pictured)* dissected the molecule. When chopped up just the right way, the resulting drug fragments displayed neither beneficial activity nor unwanted side effects. When the fragments were recombined on the surface of cancer cells, however, the drug's activity could be restored. [Read More](#)

In First-of-Its-Kind Trial, Scientists Use CRISPR to Treat Cancer

Institute for Systems Biology



Scientists for the first time have used CRISPR to substitute a gene to treat patients with cancer. Cancer treatments, while targeted at cancer cells, can often also impact healthy tissues and lead to serious side effects. The reported approach first identifies T cells that specifically recognize and kill an individual patient's tumor cells. [Read More](#)

Seattle Biotech Startup Born Out of a Roche Buyout Lands \$93M to Advance Therapies

GeekWire



Seattle biotech startup Bonum Therapeutics raised \$93 million less than two months after its parent company Good Therapeutics was bought for \$250 million by Roche, with the potential for milestone payments. Bonum Founder and CEO John Mulligan hopes to repeat the success of Good Therapeutics by using the same platform technology and potentially leveraging a similar future buyout structure. [Read More](#)

The Gut Microbiome's Supersized Role In Shaping Our Metabolome

Institute for Systems Biology (ISB)



The nearly 200-year-old phrase "you are what you eat" has some new evidence. ISB researchers, led by Dr. Sean Gibbons *(pictured)*, have found that the gut microbiome, including what we feed it, is largely responsible for the variation in circulating blood metabolites across people. This knowledge will help guide targeted interventions designed to alter the composition of the human blood metabolome. [Read More](#)

[View All Articles](#) | [Submit an Article](#)

📅 Upcoming Events in Seattle

November 29 10:00 am	Science Says Expert Series Online
December 1 12:00 pm	The First Ten Calls Every Life Science Entrepreneur Should Make Online
December 2 12:00 pm	Inside Immunology Online
December 7 6:00 pm	AWIS Holiday Happy Hour Optimism Bewing Company
December 8 4:00 pm	UW Engineering Innovation in Health Fall Showcase University of Washington

[View All Events](#) | [Submit an Event](#)

📁 Science Jobs in Seattle

Research Associate II

A-Alpha Bio

Research Associate, Imaging

Cajal Neuroscience

Scientist II

Lumen Biosciences

Senior Scientist

AAHI

Assistant Professor

Institute for System Biology

[View 50 Other Science Jobs](#) | [Submit a Job](#)

Win an Award Toward an Upcoming Cell or Gene Therapy Conference

ENTER NOW

Submit your articles and events by reaching out to us at info@scienceinseattle.com.

BROUGHT TO YOU BY



STEMCELL Technologies
Products | Services

STEMCELL Science News
Free Weekly Updates on Your Field

The Stem Cell Podcast
Interviews and Updates on Stem Cell Science