

**Publications of the Week**

### Flipped C-Terminal Ends of ApoA1 Promote ABCA1-Dependent Cholesterol Efflux by Small HDLs

 First Author: Yi He | Senior Author: Jay Heinecke *(pictured)*  
 Circulation | UW


Cholesterol efflux capacity (CEC) predicts cardiovascular disease independently of high-density lipoprotein (HDL) cholesterol levels. Researchers used model system studies of reconstituted HDL and plasma from control and lecithin-cholesterol acyltransferase-deficient subjects to investigate the relationships among the sizes of HDL particles, the structure of apolipoprotein A1 in the different particles, and the CECs of plasma and isolated HDLs. [Abstract](#)

### Multi-Omic Analysis of Human Kidney Tissue Identified Medulla-Specific Gene Expression Patterns

 First Author: Stefan Haug | Senior Author: Shreeram Aklesh *(pictured)*  
 Kidney International | UW


Despite its role in kidney function and disease, the medulla's baseline gene expression and epigenomic signatures have not been well described in the adult human kidney. Here, researchers generated and analyzed gene expression (RNA-seq), chromatin accessibility (ATAC-seq), chromatin conformation (Hi-C) and spatial transcriptomic data from the adult human kidney cortex and medulla. [Abstract](#)

[View All Publications](#)
**Awards**

### Kim Woodrow Granted the Partners in Safety Award

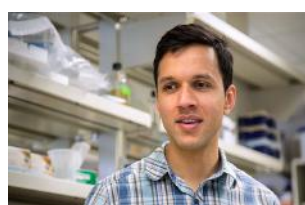
UW Department of Bioengineering



Dr. Kim Woodrow *(pictured)* has received the Partners in Safety Award from the UW Environmental Health & Safety Department. The honor recognizes individuals who have made a positive safety impact or contribution in support of labs or research groups. Dr. Woodrow is being honored for improving safety compliance in Bioengineering labs. [Read More](#)

### Teaming Up to Understand Mysterious Microproteins

Fred Hutch



Fred Hutch RNA expert Dr. Arvind "Rasi" Subramaniam *(pictured)* has teamed up with investigators at the University of Pittsburgh to better understand microproteins, long overlooked short strings of amino acids. The group received a Transformative Research Award from the National Institutes of Health to uncover the roles that microproteins play in biology. [Read More](#)

### New Projects Advance Health Equity Research

Fred Hutch



Public health researchers at Fred Hutch received two new grants to help boost health equity in cancer care and clinical research. Computational biologist Dr. Gavin Ha *(pictured)* was awarded a grant from the US Department of Defense to use real-world clinical genomic data to discover new biomarkers that could expand the use of targeted treatments to a wider population of men with prostate cancer. [Read More](#)

[View All Awards](#)
**Local News**

### Phase Genomics Advances Breakthrough Cytogenomics with the Element AVITI System for Acute Myeloid Leukemia

BioSpace



Seattle-based company Phase Genomics, founded and headed by Dr. Ivan Liachko *(pictured)*, announced the presentation of new data from the proximity ligation sequencing-based OncoTerra cytogenomics platform on the leading-edge AVITI next-generation sequencing system. The platform offers a revolutionary leap toward rapid risk stratification for acute myeloid leukemia. [Read More](#)

### Risky Business: Understanding How Numbers, Percentages, and Data Impact Cancer Care

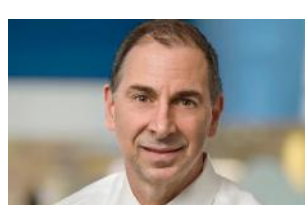
Fred Hutch



When Reiko Horst *(pictured)* was diagnosed with early-stage breast cancer, she knew next to nothing about the disease. To help determine the best treatment plan, her medical oncologist at Fred Hutch recommended doing a test called Oncotype DX to help predict Horst's risk of the cancer returning and the benefit of chemotherapy. [Read More](#)

### Focusing Care – ADHD Expert Shares Current Treatments and Latest Research at Seattle Children's

Seattle Children's



Dr. Mark Stein *(pictured)*, Director of Seattle Children's Program to Enhance Attention, Regulation, and Learning and a researcher at the Center for Child Health, Behavior, and Development, has dedicated his career to improving treatments and outcomes for children diagnosed with ADHD. His team studies how ADHD runs in families and tailors therapies through individualized evaluations and evidence-based treatment plans. [Read More](#)

### Scientists Unravel Mystery of Uneven Aging in the Body

UW Medicine Newsroom



Species and individuals age at different rates. Even within a single body, organs and biological systems age at different speeds. While this phenomenon is well-known, surprisingly little research has been done to explain why it happens. A team led by Dr. Daniel Promislow *(pictured)* at the UW School of Medicine has found a simple explanation: Cells decide themselves. [Read More](#)

### New Website Helps Engineers Find Biomedical Challenges That Crown Winning Algorithms

GeekWire



Biomedical challenges allow everyone from high school programmers to pharmaceutical companies to craft the best machine learning- or AI-powered model to solve a medical riddle. Sage Bionetworks, a Seattle nonprofit led by Luca Foschini *(pictured)*, has launched OpenChallenges, a free website where people offering and participating in biomedical challenges can find new events and match-ups. [Read More](#)

### Tim Dellit Is Named CEO of UW Medicine

UW Medicine Newsroom



Following a national search, Dr. Timothy Dellit *(pictured)* has been appointed to lead the UW School of Medicine. "Tim has proven himself to be a leader in the most difficult of times, including during the COVID-19 pandemic and as UW Medicine addresses the challenges caused by the changing healthcare landscape. He is an adept listener and communicator who is dedicated to serving all communities," UW President Ana Mari Cauce said. [Read More](#)

[View All Local News](#)
**Interesting Articles**

### Biotech Around the World: The West Coast of the United States

Genetic Engineering &amp; Biotechnology News (GEN)



Innovation isn't based on geography. There are many bastions of innovation throughout the world, each with their own advantages and pressures. During the coming year, *GEN* plans to look at some of these regions through the eyes of some of the executives who live and work there. *GEN* is beginning their exploration on the US West Coast with several researchers including Dr. Andrew Scharenberg *(pictured)*, Cofounder and CEO of Umoja Biopharma in Seattle. [Read More](#)

[View All Interesting Articles](#) | [Submit an Article](#)
**Upcoming Events in Seattle**

- December 6 8:00 AM **Seattle BioTech & Bagels Morning Virtual Meetup**  
Online
- December 7 1:00 PM **Science in Medicine New Investigator Lecture with Dr. Azadeh Yazdan**  
Foegen Building
- December 15 7:00 PM **Mad Science**  
Here-After
- January 20 9:00 AM **SEP School Year Workshop: Elephants & Cancer**  
Fred Hutch
- January 24 2:00 PM **Biomedical Entrepreneurship and its Unique Challenges**  
Online

[View All Events](#) | [Submit an Event](#)
**Science Jobs in Seattle**

- Post-Doctoral Fellow**  
Institute for Systems Biology
- Manager, Microscopy**  
Allen Institute
- Senior Research Associate**  
Cynet Systems
- Assistant Professor, Biological Sciences**  
University of Washington
- Post-Doctoral Research Fellow**  
Fred Hutch

[View 39 Other Science Jobs](#) | [Submit a Job](#)

 Submit your articles and events by reaching out to us at [info@scienceinseattle.com](mailto:info@scienceinseattle.com).

BROUGHT TO YOU BY


**STEMCELL Technologies**  
 Products | Services

**STEMCELL Science News**  
 Free Weekly Updates on Your Field

**The Stem Cell Podcast**  
 Interviews and Updates on Stem Cell Science