



Publications of the Week

### Immune Evasion of Dormant Disseminated Tumor Cells Is Due to Their Scarcity and Can Be Overcome by T Cell Immunotherapies

First Author: Erica Goddard | Senior Authors: Stanley Riddell and Cyrus Ghajar (pictured)  
Cancer Cell | Fred Hutch



The period between “successful” treatment of localized breast cancer and the onset of distant metastasis can last many years, representing an unexploited window to eradicate disseminated disease and prevent metastases. Researchers find that the source of recurrence — disseminated tumor cells (DTCs) — evade endogenous immunity directed against tumor neoantigens. This study describes a phenomenon called “relative scarcity” that underlies DTC immunoevasion. [Abstract](#) | [Press Release](#)

[View All Publications](#)

Awards

### Dr. John Ray Receives NIH New Innovator Award

Benaroya Research Institute (BRI)



The prestigious National Institutes of Health (NIH) Director’s New Innovator Award provides significant funding for innovative research that holds the promise of high rewards. And BRI geneticist Dr. John Ray (pictured) has just received one. With this funding, Dr. Ray hopes to uncover which of the millions of regions of the genome that vary between people, called genetic variants, promote risk for autoimmune diseases. [Read More](#)

### UW BioE Students Receive Scholarships and Fellowships

UW Department of Bioengineering



Numerous students from UW’s Department of Bioengineering have been honored with scholarships and fellowships for the 2023-2024 academic year. Among the awardees are Joy Chen (pictured) from the Nabet Lab, who earned the Levinson Emerging Scholars Award, and Jamie Yang from the Boyle Lab, who earned a Washington Research Foundation Fellowship. [Read More](#)

### New Grant Fuels Research into Preventing Autoimmunity

Benaroya Research Institute (BRI)



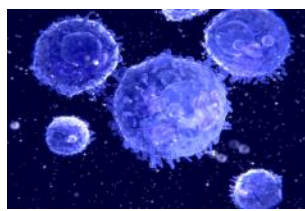
Naive T cells occasionally stray down the wrong path — growing up to become cells that cause autoimmune disease. BRI’s Dr. Alice Long (pictured) is working to understand how and why. Her research is part of a collaborative new study that received over \$6 million to explore the changes in cells, genes and molecules that lead to autoimmune diseases. [Read More](#)

[View All Awards](#)

Local News

### Indapta Therapeutics Announces First Patients Treated with IDP-023 Allogeneic Natural Killer Cell Therapy for Cancer

BusinessWire



Indapta Therapeutics, a privately held biotechnology company developing a natural killer (NK) cell therapy for the treatment of cancer called IDP-023, announced that the company has initiated treatment of the first patients in its Phase I trial in multiple myeloma and Non-Hodgkin’s lymphoma. The patients were treated at the University of Texas MD Anderson Cancer Center and NEXT Oncology, Virginia. [Read More](#)

### Study from Kueh Lab Describes Surprising Agility in T Cell Threat Assessment

Institute for Stem Cell & Regenerative Medicine



Scientists have appreciated for many decades that T cells have a sophisticated alarm system that can tell viruses, bacteria, tumors, and other dangers apart from healthy cells in the body. While this alarm system works is generally well understood, a more thorough understanding could help scientists engineer immune cells in the lab. That’s the goal of Dr. Hao Yuan Kueh (pictured). [Read More](#)

### Parse Biosciences Acquires Biomage

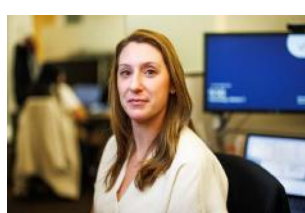
BusinessWire



Parse Biosciences, a leading provider of accessible and scalable single cell sequencing solutions, announced it has acquired data analysis software company Biomage. With the acquisition, customers will have access to a richer suite of single cell data analysis tools through an intuitive interface. Parse Biosciences was founded based on a transformative technology invented at UW. [Read More](#)

### Outstanding People Are the Heart of the Hutch

Fred Hutch



Fred Hutch clinical and admin teams share their passion for helping patients in a new series of stories. Clinical research manager Dr. Erica Peters (pictured) said she was able to empathize and connect with patients much more after her own sarcoma diagnosis. “I had been working in clinical trials for about three years when I was diagnosed,” said Dr. Peters. [Read More](#)

### 3,000 Types Of Brain Cells Categorized In Massive Brain Cell Atlas

Science Friday



In October 2023, an international group of scientists released an impressively detailed cell atlas of the human brain, published in 21 papers in the journals *Science*, *Science Advances*, and *Science Translational Medicine*. The Science Friday Podcast talks with one of the researchers who helped put together the cell atlas, Dr. Ed Lein, Senior Investigator at the Allen Institute for Brain Science. [Read More](#)

### Curevo’s Shingles Vaccine Equals GSK’s Shingrix in Phase II Head-to-Head

Fierce Biotech



When Curevo Vaccine decided to go head-to-head with GSK in the Shingles space it seemed like a bold move for the small, privately held biotech — but so far it’s paying off. The Seattle-based company’s non-mRNA, adjuvanted subunit vaccine has held its own against the Big Pharma’s blockbuster Shingles vaccine in a phase II trial. [Read More](#)

[View All Articles](#) | [Submit an Article](#)

### Upcoming Events in Seattle

January 24 12:00 PM	<b>Science Matters Seminar: The Genetics of Pediatric Epilepsy Disorders: From Genomics to Targeted Therapies</b> Online
January 24 2:00 PM	<b>Biomedical Entrepreneurship and Its Unique Challenges</b> Online
January 31 8:00 AM	<b>Seattle BioTech &amp; Bagels Morning Virtual Meetup</b> Online
February 1 4:00 PM	<b>2024 Long-Covid Symposium</b> UW
February 4 2:30 PM	<b>Microbiology Essentials</b> SoundBio Lab

[View All Events](#) | [Submit an Event](#)

### Science Jobs in Seattle

- Assistant/Associate Professor, Prostate Cancer**  
Fred Hutch
- Research Scientist I**  
Seattle Children’s
- Postdoctoral Research Associate, Microbiology**  
IEH Laboratories
- Clinical Research Faculty Assistant/Associate Member**  
Benaroya Research Institute
- Post Doctorate RA**  
Pacific Northwest National Laboratory

[View 39 Other Science Jobs](#) | [Submit a Job](#)

Submit your articles and events by reaching out to us at [info@scienceinseattle.com](mailto:info@scienceinseattle.com).

BROUGHT TO YOU BY



**STEMCELL Technologies**

Products | Services

**STEMCELL Science News**

Free Weekly Updates on Your Field

**The Stem Cell Podcast**

Interviews and Updates on Stem Cell Science

