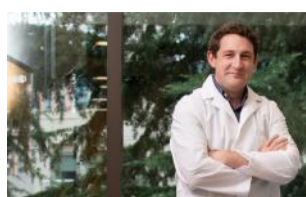




Publications of the Week

Antigen-Level Resolution of Commensal-Specific B Cell Responses Can Be Enabled by Phage Display Screening Coupled with B Cell Tetramers

First Author: Sheenam Verma | Senior Author: Oliver Harrison *(pictured)*
Immunity | Benaroya Research Institute and UW



Induction of commensal-specific immunity contributes to tissue homeostasis, yet the mechanisms underlying induction of commensal-specific B cells remain poorly understood in part due to a lack of tools to identify these cells. Using phage display, researchers identified segmented filamentous bacteria (SFB) antigens targeted by serum and intestinal antibodies and generated B cell tetramers to track SFB-specific B cells in gut-associated lymphoid tissues. [Abstract](#) | [Press Release](#)

SRC Inhibition Enables Formation of a Growth Suppressive MAGI1-PP2A Complex in Isocitrate Dehydrogenase-Mutant Cholangiocarcinoma

First Author: Iris Luk | Senior Author: Sita Kugel *(pictured)*
Science Translational Medicine | Fred Hutch and UW



Intrahepatic cholangiocarcinoma (ICC) is an aggressive bile duct malignancy that frequently exhibits isocitrate dehydrogenase (*IDH1/IDH2*) mutations. Mutant IDH (IDHm) ICC is dependent on SRC kinase for growth and survival and is hypersensitive to inhibition by dasatinib. Researchers found that dasatinib reduced p70 S6 kinase and ribosomal protein S6, leading to substantial reductions in cell size and *de novo* protein synthesis. [Abstract](#) | [Press Release](#)

Rho-Associated Kinase Regulates Langerhans Cell Morphology and Responsiveness to Tissue Damage

First Author: Eric Peterman | Senior Author: Jeffrey Rasmussen *(pictured)*
Cell Reports | Institute for Stem Cell and Regenerative Medicine and UW



Epidermal-resident immune cells known as Langerhans cells use dendritic protrusions to surveil the skin microenvironment, which contains keratinocytes and peripheral axons. The mechanisms governing Langerhans cell dendrite dynamics and responses to tissue damage are poorly understood. This work describes the dynamics of Langerhans cells and involvement of the ROCK pathway in immune cell responses. [Abstract](#)

[View All Publications](#) ↗

Awards

Fred Hutch and UW Hematology/Oncology Fellows Win ASCO Young Investigator Awards

Fred Hutch



Three research fellows at Fred Hutch Cancer Center focusing on the problems with current cancer treatments won Young Investigator Awards this year from Conquer Cancer, the ASCO Foundation. Award recipients Drs. Emily Liang, Steve Blinka *(pictured, left)*, and Natasha Kwendakwema *(right)* represent the wide range of research supported by the Hematology/Oncology Fellowship Program at Fred Hutch and UW. [Read More](#)

Meet the 2024 Tietze Award Winners

Institute for Stem Cell & Regenerative Medicine (ISCRM)



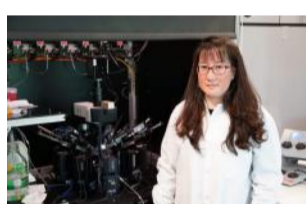
ISCRM Associate Director Dr. Nate Sniadecki and Acting Assistant Professor Dr. Hichem Tasfaout *(pictured)* have received prestigious awards from the John H. Tietze Foundation Trust that will help fuel promising research underway in their labs. This funding will allow Dr. Tasfaout to investigate a new gene delivery method that takes advantage of a system known as SIMPLI-GT. [Read More](#)

[View All Awards](#) ↗

Local News

Zapping the Right Brain Cells: The Path to Improved Stimulation

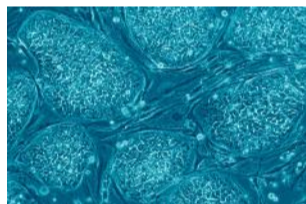
Allen Institute



Sending electrical currents into the brain is an established treatment for neurological conditions like epilepsy and Parkinson's. But how electric stimulation (ES) affects individual brain cells remains unclear. New research led by Dr. Soo Yeun Lee *(pictured)* at the Allen Institute offers an unprecedented look at how neurons respond to ES. [Read More](#)

Indapta Therapeutics Awarded \$4.5 Million by CPRIT to Advance Clinical Development of Its Allogenic Natural Killer Cell Therapy

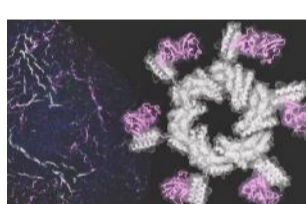
BusinessWire



Indapta Therapeutics, a Seattle-based biotechnology company developing next-generation differentiated cell therapies for the treatment of cancer and autoimmune diseases, announced that the Cancer Prevention and Research Institute of Texas (CPRIT) has granted the company a competitive product development research award. The \$4.5 million grant will support clinical development of treatment for advanced non-Hodgkin's lymphoma and multiple myeloma. [Read More](#)

Designed Proteins Guide Stem Cells to Form Blood Vessels

UW Medicine



Using computer-designed proteins, researchers have now shown they are able to direct human stem cells to form new blood vessels in the lab. This milestone in regenerative medicine offers new hope for repairing damaged hearts, kidneys, and other organs. Scientists at the UW School of Medicine led the project and their findings were published in *Cell*. [Read More](#)

Scientists Get a New Tool to Study a Common Genetic Heart Condition

Axios



Disease-specific cells developed by the Allen Institute for Cell Science offer a new window into the world's most common genetic heart condition. The six new cell line collections allow researchers to look at the impact of different mutations associated with the disease at the molecular and cellular level — before symptoms appear. This could ultimately lead to the development of more effective treatments for hypertrophic cardiomyopathy. [Read More](#)

UW Genome Sciences Hackathon Leads to New Long-Read Sequencing Technology

Brotman Baty Institute



As part of the UW Genome Sciences Hackathon, a team of 11 researchers across seven labs at the UW tested whether they could use advanced machine learning techniques developed in the Noble Lab to improve the accuracy and speed of a 'spray painting' approach to long-read sequencing. This team was led by Drs. Mitchell Vollger *(pictured, right)*, Anupama Jha *(left)*, and Stephanie Bohaczuk. [Read More](#)

[View All Articles](#) ↗ | [Submit an Article](#) ↗

📅 Upcoming Events in Seattle

- June 18
12:00 PM

A Relationship-Based Framework for Clinical Research: Ethical Considerations Beyond Informed Consent
Online
- June 21
5:30 PM

ACROConnect Antibody Workshop
Dexter Yard
- June 25 - 28
8:00 AM

7th TERMIS World Congress
Seattle Convention Center
- June 25
3:00 PM

Breast Cancer Breakthroughs Fundraising Event
SoDo Park
- June 25
5:30 PM

WIB-Seattle: Summer Social in Capitol Hill
Sole Repair

[View All Events](#) ↗ | [Submit an Event](#) ↗

🏢 Science Jobs in Seattle

- Postdoctoral Fellow, Vaughn/Kappe Lab**
Seattle Children's
- Postdoctoral Research Fellow**
Fred Hutch
- Principal Scientist, Potency and Impurities**
Evotec
- Research Associate I, Histology**
Allen Institute
- Research Scientist, Genetics**
UW

[View 40 Other Science Jobs](#) ↗ | [Submit a Job](#) ↗

Free On-Demand Training:
Human T Cell Expansion Course



[REGISTER NOW](#) ➔

Submit your articles and events by reaching out to us at info@scienceinseattle.com.

BROUGHT TO YOU BY



STEMCELL Technologies
Products | Services

STEMCELL Science News
Free Weekly Updates on Your Field

The Stem Cell Podcast
Interviews and Updates on Stem Cell Science

