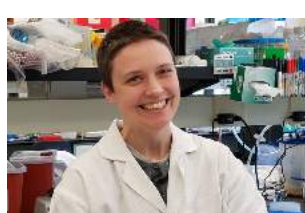




Publications of the Week

### Lupus IgA1 Autoantibodies Synergize with IgG to Enhance Plasmacytoid Dendritic Cell Responses to RNA-Containing Immune Complexes

First Author: Hayley Waterman (*pictured*) | Senior Author: Jessica Hamerman  
 Science Translational Medicine | Benaroya Research Institute and UW



Autoantibodies to nuclear antigens are hallmarks of systemic lupus erythematosus (SLE) where they contribute to pathogenesis. Researchers focused on IgA, which is the second-most prevalent isotype in serum and, along with IgG, is deposited in glomeruli in individuals with lupus nephritis. This study shows that individuals with SLE have serum IgA autoantibodies against most nuclear antigens, correlating with IgG against the same antigen. [Abstract](#) | [Press Release](#)

### Gene Regulatory Network Topology Governs Resistance and Treatment Escape in Glioma Stem-Like Cells

First Author: James Park | Senior Author: Nitin Baliga (*pictured*)  
 Science Advances | Institute for Systems Biology and UW



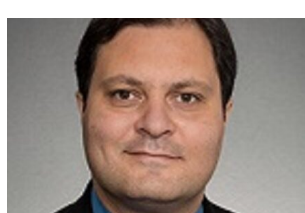
Poor prognosis and drug resistance in glioblastoma can result from cellular heterogeneity and treatment-induced shifts in phenotypic states of tumor cells, including dedifferentiation into glioma stem-like cells (GSCs). Researchers demonstrate how the topology of transcription factor interaction networks drives distinct trajectories of cell-state transitions in patient-derived GSCs resistant or susceptible to cytotoxic drug treatment. [Abstract](#) | [Press Release](#)

[View All Publications](#)

Awards

### Dr. Bilal Malik Voted Nephrology Teacher of the Year

UW Medicine



UW Medicine congratulates Dr. Bilal Malik (*pictured*) on being voted Nephrology Teacher of the Year by the nephrology fellows. This award recognizes an exceptionally dedicated and skilled teacher for nephrology trainees. Dr. Malik is the Director of the UW Medicine Onconephrology Clinic and served as the Program Director of the Nephrology Fellowship Program from 2014-2017. [Read More](#)

### HHMI Names 50 Gilliam Fellows in Milestone Year

Howard Hughes Medical Institute



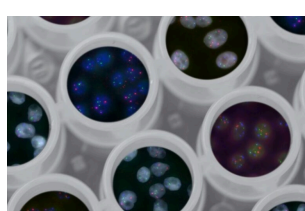
The Howard Hughes Medical Institute (HHMI) congratulates 50 graduate students in science and their advisers who were named to the 2024 cohort of the Gilliam Fellows Program. Among the 50 awardees is Sydney Floryanzia (*pictured*), a graduate student from Dr. Elizabeth Nance's lab, where she investigates drug delivery mechanisms and models brain physiology and pathology with *in vitro* and *ex vivo* systems. [Read More](#)

[View All Awards](#)

Local News

### NIH Innovation Zone 2024: Talus Bio Pioneers Breakthroughs in 'Undruggable' Transcription Factors

BioNews



Talus Bio's collaborative and innovative approach to unlocking the therapeutic potential of targeting transcription factors for cancer and other diseases is putting them at the forefront of the biotech industry. Tackling the challenge of "undruggable" targets, Talus Bio is working to solve some of the most historically difficult science and medicine in the industry and provide patients with life-saving solutions. [Read More](#)

### Seattle-Based RareCyte Raises \$20M for Cell Analysis Products

GeekWire



Seattle-based life sciences company RareCyte announced \$20 million in new funding to advance its applications for the analysis of cells. RareCyte sells imaging-based liquid and tissue biopsy analysis platforms that detect and analyze cells. The company's products are primarily aimed at clinical and translational researchers in academia and biopharma companies. [Read More](#)

### Another Look at Leptin

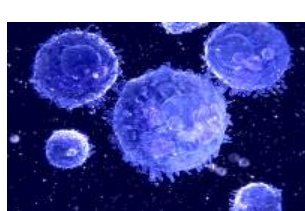
Fred Hutch



Decades ago, researchers hoped that a drug increasing leptin could suppress appetite and reduce obesity, but they ran into a brick wall called "leptin resistance" and moved on to other prospects. Dr. Akhila Rajan (*pictured*) and her colleagues took another look at leptin and believe they may have found a way around that brick wall. Dr. Rajan describes how a protein known for its role when food is scarce flips a switch when food is plenty and triggers the secretion of leptin. [Read More](#)

### Evotec Biologics Expands Tech Partnership for Biosimilars with Sandoz

Evotec Biologics



Seattle-based Evotec Biologics has expanded its strategic partnership with Sandoz. Just – Evotec Biologics will receive appropriate remuneration following early scientific validation, with further funding tied to achieving development milestones from 2025. This expanded partnership solidifies Just – Evotec Biologics' commitment to providing long-term commercial supply of biosimilars. [Read More](#)

### Breaking Ground in Biotech: ITHS EXPO Lightning Talks

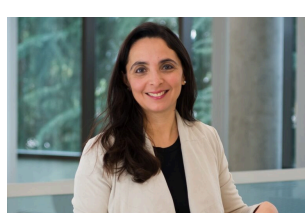
Institute of Translational Health Sciences (ITHS)



This year's ITHS Expo showcased cutting-edge advancements in nanotech in medicine featuring two distinguished key note speakers, Dr. Philip Low and Dr. Rodney Ho (*pictured*). Alongside the keynotes, the event included an hour of captivating lightning talks spotlighting the pioneering inventions in the biomedical realm. The lightning talks are now available to watch. [Read More](#)

### Investigating a Little-Understood Cell in MS

Benaroya Research Institute



People with multiple sclerosis (MS) have more treatment options than ever. These therapies can reduce symptoms and greatly improve quality of life. This is thanks, in part, to scientists like Benaroya Research Institute's Dr. Estelle Bettelli (*pictured*) who study how and why MS happens and seek new ways to treat it. But there's still a long way to go. [Read More](#)

[View All Articles](#) | [Submit an Article](#)

### Upcoming Events in Seattle

July 15 - 17 8:00 AM	<b>2024 Allen Institute Modeling Software Workshop</b> Allen Institute
July 18 4:30 PM	<b>LifeSci Link: Allen Cell Collection</b> Dexter Yard
July 25 5:30 PM	<b>WIB-Seattle: Summer Social in Capitol Hill</b> Sole Repair Shop
August 8 4:00 PM	<b>Nucleate Seattle Genesis Lecture Series</b> Arthur W. Buerk Center for Entrepreneurship
August 8 5:30 PM	<b>The Brain? IDK! What We Know and Don't Know About Brain Cells</b> Allen Institute

[View All Events](#) | [Submit an Event](#)

### Science Jobs in Seattle

- Laboratory Technical Assistant, Histology**  
Virginia Mason Medical Center
- Senior Research Associate**  
Aequor
- Senior Research Associate**  
System One
- Research Scientist/Engineer 1**  
UW
- Research Associate**  
Astrix

[View 51 Other Science Jobs](#) | [Submit a Job](#)



Submit your articles and events by reaching out to us at [info@scienceinseattle.com](mailto:info@scienceinseattle.com).

BROUGHT TO YOU BY



**STEMCELL Technologies**

Products | Services

**STEMCELL Science News**

Free Weekly Updates on Your Field

**The Stem Cell Podcast**

Interviews and Updates on Stem Cell Science

