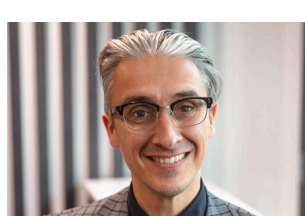


Publications of the Week

Targeting the Membrane-Proximal C2-Set Domain of CD33 for Improved CAR T Cell Therapy

First Author: Salvatore Fiorenza *(pictured)* | Senior Author: Roland Walter
Molecular Therapy Oncology | Fred Hutch



Current CD33-targeted immunotherapies typically recognize the membrane-distal V-set domain of CD33. Here, researchers show that decreasing the distance between T cell and leukemia cell membrane increases the efficacy of CD33 chimeric antigen receptor T cells. This study provides the rationale to investigate CD33PAN CAR T cells further toward possible clinical application. [Abstract](#)

[View All Publications](#)

Awards

Finding a Rare Bile Duct Cancer’s Weaknesses

Fred Hutch



Fred Hutch Postdoctoral Fellow Dr. Liberalis (Debraj) Boila *(pictured)* has received two awards to support his studies of an aggressive bile duct cancer called intrahepatic cholangiocarcinoma (ICC). Funding from the Department of Defense Rare Cancers Research Program and the Cholangiocarcinoma Foundation will allow Dr. Boila to study how two of the most common ICC mutations drive cancer and contribute to each subtype’s unique treatment vulnerabilities. [Read More](#)

Cell Biologist Dr. Susan Parkhurst Named 2024 ASCB Fellow

Fred Hutch



The American Society for Cell Biology has named Fred Hutch cell biologist Dr. Susan Parkhurst *(pictured)* a fellow. The honor acknowledges scientists chosen by their peers for lifetime achievements in the field of cell biology. Dr. Parkhurst joined Fred Hutch in 1992 and holds the Mark Groudine Endowed Chair for Outstanding Achievements in Science and Service. [Read More](#)

[View All Awards](#)

Local News

Protein Design Startup Outpace Lands \$144M to Test Treatments That Target Solid Tumors

GeekWire



Outpace Bio, a Seattle startup using artificial intelligence to design proteins that are incorporated into cancer therapies targeting solid tumors, has raised \$144 million in new cash from investors. The fresh funding will allow Outpace researchers to test its treatment in a clinical setting. The goal is to benefit patients and validate the company’s approach to battling cancer. [Read More](#)

Allen Institute Partners to Bring Open Science to Africa

Allen Institute



Twenty undergraduate and graduate students from across Africa were selected to explore how computational neuroscience and machine learning might help us understand the brain’s deepest mysteries. In mid-July, they gathered at the highly competitive summer course organized by TRoND in Africa and the Allen Institute. [Read More](#)

Introducing “PNRI Science: Mystery and Discovery” — A New PNRI Podcast

Pacific Northwest Research Institute



The Pacific Northwest Research Institute (PNRI) has announced the launch of their brand-new podcast, “PNRI Science: Mystery and Discovery”. Hosted by PNRI’s CEO, Dr. Jack Faris *(pictured)*, and introduced by his daughter, actor/producer Anna Faris, this podcast is perfect for anyone curious about science. Join them as they go beyond the jargon to explore the passion and people behind the science. [Read More](#)

Promising Young Scientist: A ‘Defiant’ Researcher, Inspired by Personal Connection to Nobel Laureates Crick and Watson, Joins Sea-Hub Faculty

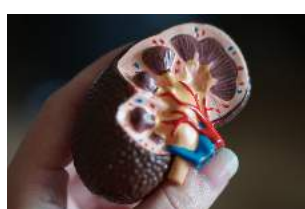
Brotman Baty Institute



In January 2024, Dr. Sudarshan Pinglay *(pictured)* accepted a faculty position with the Seattle Hub for Synthetic Biology, where he will investigate synthetic biology. His research interests span development, genomics, and cellular engineering. “There are so many opportunities here in Seattle, opportunities in areas I had not even considered,” Dr. Pinglay said. [Read More](#)

Acute Kidney Injury Might Diminish Cognition, Study Finds

UW Medicine



Patients who sustain an acute kidney injury during a hospital stay due to a heart or lung condition face the risk of reduced mental acuity — even years later. This finding emerged in a study published this month in the *Clinical Journal of the American Society of Nephrology*. The UW Medicine-led study followed 1,538 patients for three years to investigate cognitive changes. [Read More](#)

Designing Synthetic Smell Receptors

Institute for Protein Design



The sense of smell depends on sensitive proteins embedded in the nose. In two studies published recently in *Science*, a team led by the Baker Lab has shown that an effectively unlimited number of new protein sensors can now be generated with the help of AI. This is a major step toward more advanced molecular sensing technologies for use in healthcare, pollution monitoring, and more. [Read More](#)

Two Steps Forward, One Step Back for Targeting NKG2D in Cancer Treatment

Fred Hutch



When it comes to engineering proteins, Dr. Roland Strong *(pictured)* and his lab at Fred Hutch, are probably the people you want to talk to. His lab utilizes a system that they had developed called Daedalus, which allows quick, cheap and remarkably effective protein production. Now, the lab used this system to produce NKG2D ‘decoys’, which they hoped could be used to interfere with a signaling axis that that is used by tumorigenic cells to their advantage. [Read More](#)

[View All Local News](#) | [Submit an Article](#)

Upcoming Events in Seattle

August 18 - September 1 8:00 AM	Summer Workshop on the Dynamic Brain 2024 Friday Harbor
August 22 4:00 PM	Nucleate Seattle Genesis Lecture Series: Market Identification Arthur W. Buerk Center for Entrepreneurship
August 28 8:00 AM	Seattle BioTech & Bagels Morning Meetup Online
August 29 4:00 PM	Nucleate Seattle Genesis Lecture Series: Scientific Strategy Arthur W. Buerk Center for Entrepreneurship
September 5 6:30 PM	Lab Skills Course: Microbiology Essentials SoundBio Lab

[View All Events](#) | [Submit an Event](#)

Science Jobs in Seattle

- Postdoctoral Fellow, Piliponsky Lab**
Seattle Children’s Research Institute
- Research Associate I, Neurophysiology of Naturalistic Learning**
Allen Institute
- Research Assistant**
Fred Hutch
- Clinical Laboratory Coordinator**
UW
- Lab Technical Assistant, Pathology**
Virginia Mason Medical Center

[View 44 Other Science Jobs](#) | [Submit a Job](#)



Submit your articles and events by reaching out to us at info@scienceinseattle.com.

BROUGHT TO YOU BY



STEMCELL Technologies

Products | Services

STEMCELL Science News

Free Weekly Updates on Your Field

The Stem Cell Podcast

Interviews and Updates on Stem Cell Science