



Publications of the Week

Progression to Type 1 Diabetes in the DPT-1 and TN07 Clinical Trials Is Critically Associated with Specific Residues in HLA-DQA1-B1 Heterodimers

First Author: Lue Ping Zhao (pictured) | Senior Author: Åke Lernmark
Diabetologia | Fred Hutch



The aim of this work was to explore molecular amino acids and related structures of *HLA-DQA1-DQB1* that underlie its contribution to the progression from stages 1 or 2 to stage 3 type 1 diabetes. These results unveil the contribution made by DQ to type 1 diabetes progression at individual residues and related protein structures, shedding light on its immunological mechanisms and providing new leads for developing treatment strategies. [Abstract](#)

[View All Publications](#)

Awards

NIH Funds Three Syphilis Diagnostics Projects

UW Medicine



To address the recent surge in the United States of syphilis infections, the National Institutes of Health (NIH) has awarded grants to fund three University of Washington School of Medicine projects to develop better diagnostic tests for syphilis. The grants have been awarded to the laboratories of Drs. Stephen Salipante, Joshua Lieberman, and Alexander Greninger (pictured). [Read More](#)

Three WSU Researchers Receive Funding from Washington Research Foundation

WSU Insider



The Washington Research Foundation (WRF) recently awarded three Washington State University (WSU) researchers with grant funding to develop detailed plans for projects and programs that could significantly advance the state's life-science ecosystem and improve lives. Drs. Ken Roberts, Jon Oatley (pictured), and Kevin Murphy were among 12 teams of investigators awarded nearly \$2.2 million. [Read More](#)

Making the Most of a Small Supply

Fred Hutch



The rare liver cancer fibrolamellar carcinoma, or FLC, affects only one out of 5 million people, usually children or young adults with otherwise healthy livers. Its rarity also makes the disease difficult to study in the lab because tumor samples are few and far between. Dr. Taran Gujral (pictured) recently received a four-year, \$1,275,000 grant to study FLC and four other rare liver cancers. [Read More](#)

[View All Awards](#)

Local News

Allen Institute for Immunology Unveils Landmark Human Immune Health Atlas

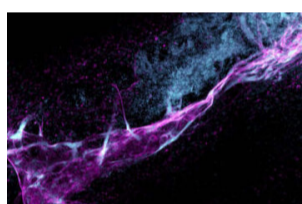
Allen Institute



The Allen Institute for Immunology announced the release of its first Human Immune Health Atlas, a comprehensive single-cell reference dataset that offers unprecedented insight into the landscape of healthy human immune cells from childhood through adulthood. The atlas provides detailed profiles of 71 distinct immune cell subsets, based on the analysis of 1.8 million cells taken from over 100 healthy volunteers. [Read More](#)

Stunning Images Taken by UW Bioengineering's Students and Postdocs

UW Department of Bioengineering



This past summer, the Bioengineering Department at UW asked students and postdocs to submit images of cells or other matter to possibly be included on the cover of the 2024 impact report. Two winners were announced: Olivia Prado, a PhD candidate who works in the Stevens lab, and Isabella Kwan, a BS student with the Zheng lab. Prado's winning image is shown (pictured). [Read More](#)

The Baker Lab Podcast

The Baker Lab Podcast



A new Seattle science podcast has launched which pulls back the curtain on scientific discovery. Hosted by Professor David Baker, The Baker Lab Podcast invites you to hear from real people at the forefront of biology, chemistry, physics, and AI. Their personal journeys, challenges, and triumphs reveal that there are many ways of becoming and being a scientist. [Read More](#)

Advances in T1D Prediction: An Algorithm To Help Define When a Person May Develop T1D

Benaroya Research Institute



Benaroya Research Institute's Dr. Carla Greenbaum (pictured) and her team recently developed an algorithm that might one day give people on track to develop type 1 diabetes (T1D) a better idea of when it will present. This algorithm is designed to help doctors better predict when someone might develop T1D, which can help inform decisions about their care. [Read More](#)

Global Effort to Map the Human Brain Releases First Data

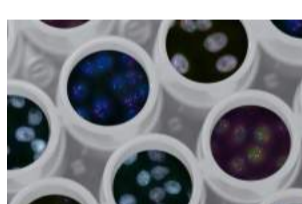
Allen Institute



The BRAIN Initiative® Cell Atlas Network (BICAN) has launched its first major data release, marking a significant milestone in the ambitious effort to map the whole human brain. The data, accessible through the BICAN Rapid Release Inventory, includes single-cell and single-nucleus transcriptomic and epigenomic profiles from humans, mice, and ten other mammalian species. [Read More](#)

MoIES Launches New Scientific Advisory Council

UW Molecular Engineering and Science Institute



The UW Molecular Engineering and Science (MoIES) Institute established its first scientific advisory council. The council will advise the MoIES leadership on strategic areas of opportunity as the Institute strives toward its mission to foster scientific exchanges and new collaborations among MoIES members, the wider UW research community, and industry leaders from biotech. [Read More](#)

Genetic Testing Helps Predict Leukemia Prognosis

UW Medicine



Acute lymphoblastic leukemia (ALL) is commonly associated with certain genetic markers, which can be detected with genetic tests like chromosomal genomic array testing (CGAT). A recent study led by Dr. Ryan Cassaday (pictured) examines the correlation between specific copy-number alterations identified by CGAT and patient prognosis for adult patients newly diagnosed with ALL. [Read More](#)

[View All Local News](#) | [Submit an Article](#)

Upcoming Events in Seattle

- October 16 - 17 **2024 ISB Virtual Microbiome Series**
9:00 AM Online
- October 20 - 24 **Lake Conference – Comparative and Evolutionary Neurobiology**
8:00 AM The Hyatt Regency Seattle
- October 24 **Immunology to Change Lives**
5:30 PM Seattle's Sunset Club
- October 25 **Crash Course: Where Smart Meets Funny**
7:30 PM The Rendezvous
- October 30 **Seattle BioTech & Bagels Morning Meetup**
8:00 AM Online

[View All Events](#) | [Submit an Event](#)

Science Jobs in Seattle

- Research Technician III, Byrd Laboratory**
Benaroya Research Institute
- Postdoctoral Fellow, Vaughn/Kappe Lab**
Seattle Children's
- Associate Research Scientist**
Aequor
- Assistant, Associate, or Full Professor, Biomedical Informatics and Digital Health**
The Institute for Systems Biology
- Associate Research Scientist**
Cynet Systems

[View 61 Other Science Jobs](#) | [Submit a Job](#)



Submit your articles and events by reaching out to us at info@scienceinseattle.com.

BROUGHT TO YOU BY



STEMCELL Technologies

Products | Services

STEMCELL Science News

Free Weekly Updates on Your Field

The Stem Cell Podcast

Interviews and Updates on Stem Cell Science