

Publications of the Week

RNA Polymerase II at Histone Genes Predicts Outcome in Human Cancer

First Authors: Steven Henikoff and Ye Zheng (*pictured*) | Senior Author: Kami Ahmad  
Science | Fred Hutch



Genome-wide hypertranscription is common in human cancer and predicts poor prognosis. To understand how hypertranscription might drive cancer, researchers applied their formalin-fixed paraffin-embedded (FFPE)–cleavage under targeted accessible chromatin method for mapping RNA polymerase II genome-wide in FFPE sections. [Abstract](#) | [Press Release](#)

[View All Publications](#)

Awards

Fred Hutch Announces Ten Recipients of the 2025 Harold M. Weintraub Graduate Student Award

Fred Hutch



Fred Hutch announced ten recipients of the annual Harold M. Weintraub Graduate Student Award, which recognizes the exceptional achievements of graduate studies in the biological sciences. This year’s recipients represent both national and international research institutions, with a variety of thesis topics. The awardees from Seattle are Jeremy Hollis (*pictured*) and Leila Elabbady from Fred Hutch and UW, respectively. [Read More](#)

2025 Elaine Redding Brinster Prize Awarded to Mary-Claire King

UW Medicine



The Institute for Regenerative Medicine at the University of Pennsylvania has awarded the 2025 Elaine Redding Brinster Prize to UW’s Dr. Mary-Claire King (*pictured*) for her pioneering work on a genetic basis for breast cancer. Dr. King proved the existence and precise location of variants of the *BRCA1* gene responsible for inherited predisposition to breast and ovarian cancer. [Read More](#)

Washington Research Foundation Awards \$10M to Seattle Hub for Synthetic Biology to Advance Cell and Genome Technologies

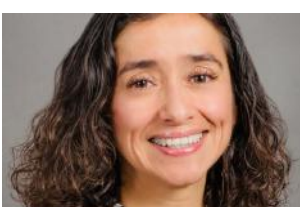
Washington Research Foundation (WRF)



WRF has pledged \$10 million over five years in support of a new program led by UW Medicine’s Brotman Baty Institute and the Allen Institute. The program, SeaBridge, will advance cell and genome reprogramming technologies developed at the Seattle Hub for Synthetic Biology to help address a wide range of diseases. Drs. Jesse Gray, Jay Shendure, and Marion Pepper (*pictured*) are leaders of the SeaBridge program. [Read More](#)

Dr. Lorena Alarcon-Casas Wright Receives Outstanding Service Award

UW Medicine



Dr. Lorena Alarcon-Casas Wright (*pictured*), Professor of Clinical Practice of Metabolism, Endocrinology, and Nutrition at UW, is the 2025 recipient of the American Association of Clinical Endocrinology Outstanding Service Award for the Promotion of Endocrine Health to the Underserved. Dr. Wright was recognized for her efforts to found and lead the LatinX Clinic at the UW Medicine Diabetes Institute. [Read More](#)

[View All Awards](#)

Local News

Rare Disease Day 2025: Accelerating Discovery Together

Pacific Northwest Research Institute



On February 28, 2025, scientists, clinicians, patient advocates, rare disease families, and students gathered for a common goal: accelerating discovery together for rare diseases. Rare Genetic Disease Research in Seattle and Beyond, the inaugural Rare Disease Day event in Seattle was more than just a meeting — it was a milestone. [Read More](#)

Fred Hutch Deploys AI Technology to Help Analyze Colonoscopies

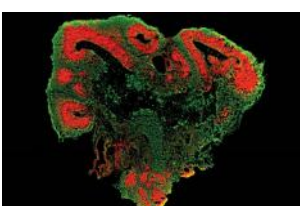
Fred Hutch



Endoscopists who perform colonoscopies are trained to zoom in on the nooks and crannies of the colon. They are on the prowl for polyps, small clumps of cells that may turn cancerous if not removed. Hard-to-find polyps are a perfect match for GI Genius, a new AI technology that Dr. David Hockenbery (*pictured*) at Fred Hutch is using to read colonoscopy scans. [Read More](#)

What Are the Parts of the Brain?

Allen Institute



Did you know that part of your brain is built from the inside out? Have you ever considered why the brain has a wrinkly exterior? You may be familiar with terms like white matter, grey matter, neurons, and the cerebral cortex — and maybe you’ve wondered what they mean, where they are, or what they do. Scientists at the Allen Institute are working to uncover the secrets of this remarkable organ. [Read More](#)

In Memory: World STD Research Pioneer Dr. King Holmes

UW Medicine



Infectious disease specialist Dr. King Kennard Holmes (*pictured*), who is credited with bringing the previously ignored field of sexually transmitted infections (STIs) to the forefront of medical research, died Sunday, March 9, 2025, in Seattle after a long illness. He was 87. Dr. Holmes was Distinguished Professor Emeritus of Global Health and Professor Emeritus of Medicine in the Division of Allergy and Infectious Diseases at UW. [Read More](#)

[View All Local News](#) | [Submit an Article](#)

Interesting Articles

Apply Now for TSEP: The ITHS Translational Science Entrepreneurship Program

Institute of Translational Health Sciences (ITHS)



The ITHS Technology Development Center is looking for researchers who are ready to prepare for the founding and leadership of a startup company to join the Translational Science Entrepreneurship Program (TSEP). This year-long hybrid program is designed to help researchers accelerate the translation of scientific and technological innovations into practical clinical use. [Read More](#)

[View All Interesting Articles](#) | [Submit an Article](#)

Upcoming Events in Seattle

March 18 6:00 PM	<b>Biotech Networks Speed Networking &amp; Writing Workshop</b> Stoup Brewing
March 19 12:00 PM	<b>PNRI’s Science Matters Seminar with Dr. Richard Gibbs: Rare Disease, Common Disease, Somatic Mutation</b> Online
March 20 12:00 PM	<b>Allen Institute for Immunology Seminar Series with Dr. Jason Smith</b> Allen Institute
March 20 7:00 PM	<b>Sound Lab</b> Pacific Science Center
March 25 4:30 PM	<b>BRI’s Open House</b> Benaroya Research Institute

[View All Events](#) | [Submit an Event](#)

Science Jobs in Seattle

<b>Research Study Assistant, Virology Research Clinic</b> UW	<b>Principal Scientist</b> Roche	<b>Scientist, iPSC</b> BrainChild Bio	<b>Research Associate II, Genome Engineering and Technology Development</b> Allen Institute	<b>Assistant or Associate Professor, Breast Oncology</b> Fred Hutch
---	-------------------------------------	--	--	--

[View 53 Other Science Jobs](#) | [Submit a Job](#)

Article: To Postdoc or Not to Postdoc?  
Decision-Making Tips

[LEARN MORE](#)

Submit your articles and events by reaching out to us at [info@scienceinseattle.com](mailto:info@scienceinseattle.com).

BROUGHT TO YOU BY



<b>STEMCELL Technologies</b> Products   Services	<b>STEMCELL Science News</b> Free Weekly Updates on Your Field	<b>The Stem Cell Podcast</b> Interviews and Updates on Stem Cell Science
---	---	---